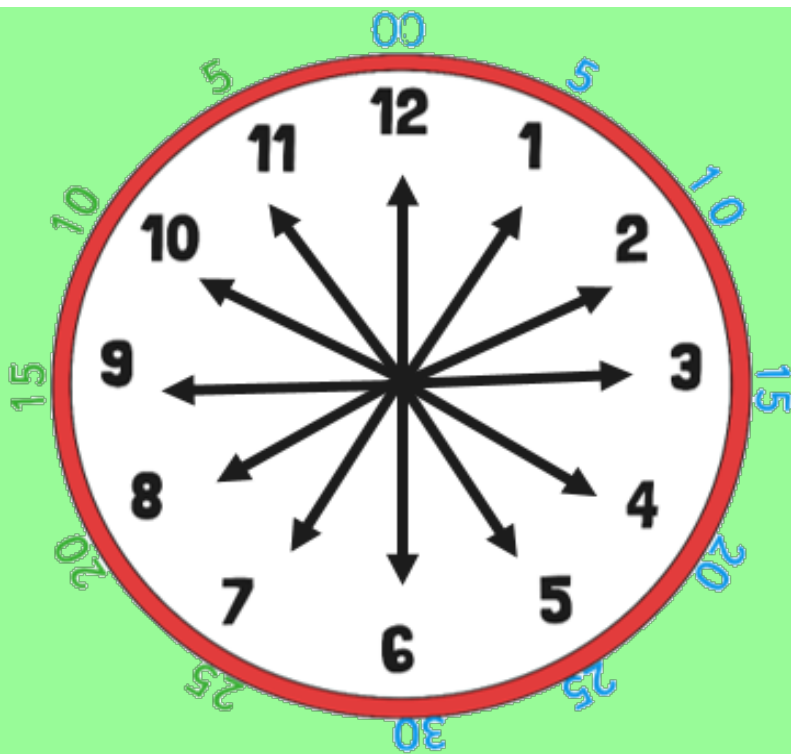
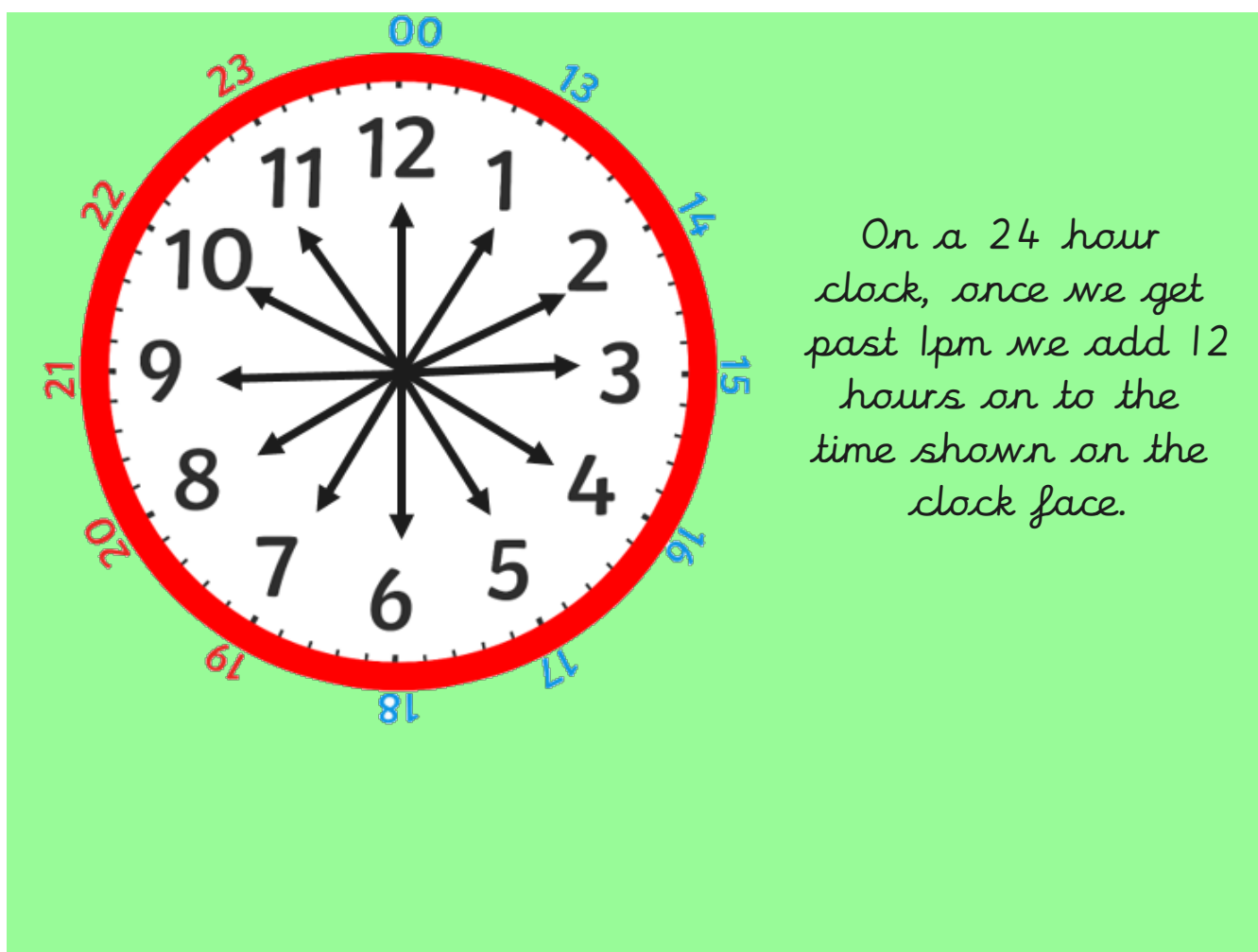


5.11.2021

L.O. telling the time on a
24 hour clock



Each number on the clock represents 5 minutes. So we can count round in 5s.



24 Hour Digital Clocks

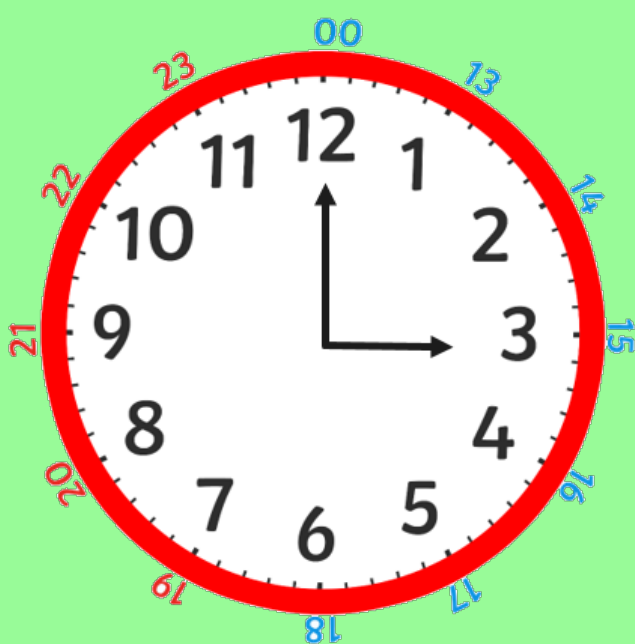


24 hour digital clocks also have an hour and minute display, separated by a colon.

The hours will always be before the colon. The hours go from 0 to 23.

The minutes will always be after the colon.

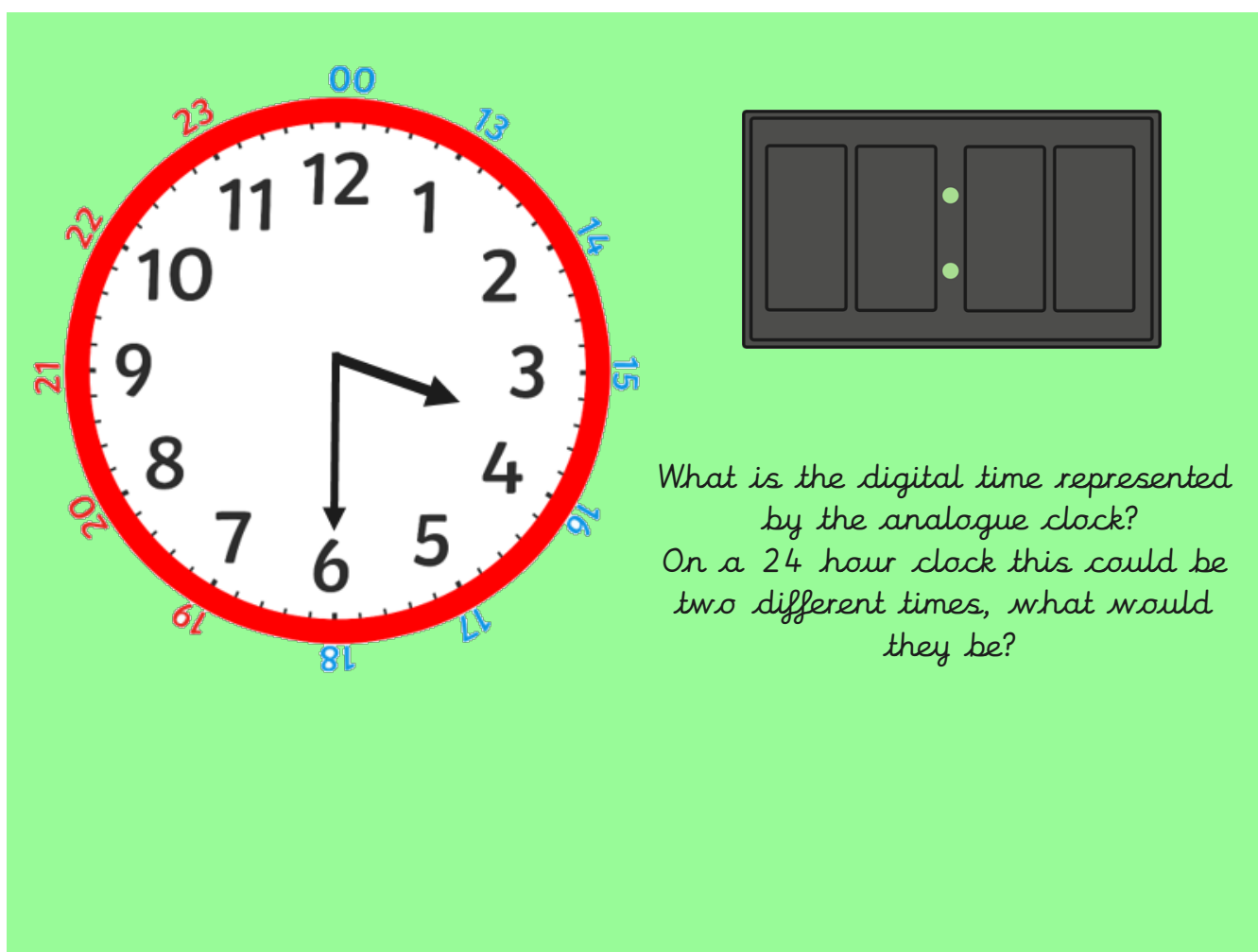
Converting from 12hour to 24hour clock



Do the clocks show the same time?

What is the same about the clocks?

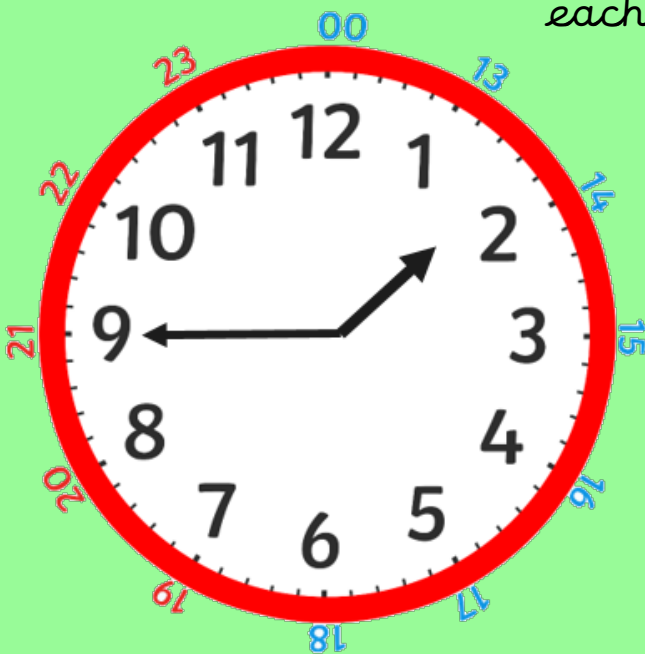
What is different?



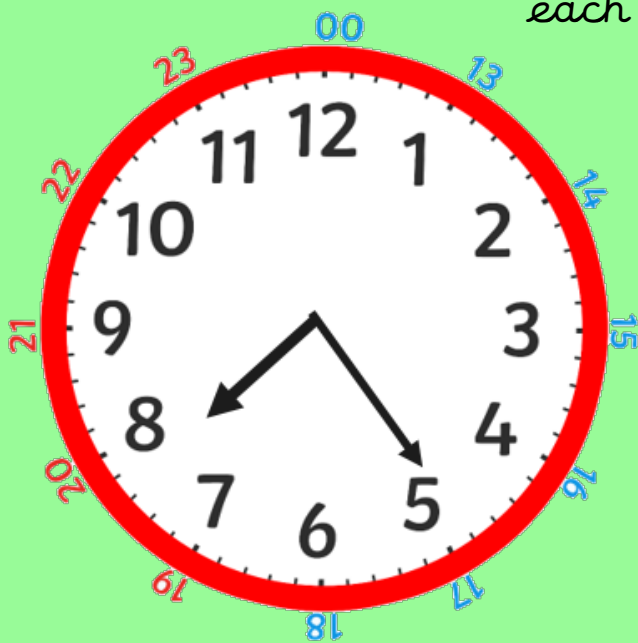
The image shows two clock representations on a light green background. On the left is an analogue clock with a red border. The face has numbers 1 through 12. The hour hand points to 6 and the minute hand points to 3. The outer ring of the clock is marked with 24-hour numbers: 00 (blue) at the top, 13 (blue) at the top-right, 14 (blue) at the right, 15 (blue) at the bottom-right, 16 (blue) at the bottom, 17 (blue) at the bottom-left, 18 (blue) at the left, 19 (red) at the bottom-left, 20 (red) at the left, 21 (red) at the top-left, 22 (red) at the top-left, and 23 (red) at the top. On the right is a digital clock display with four rectangular segments. The first two segments are empty, the third segment contains two small green dots, and the fourth segment is empty.

What is the digital time represented by the analogue clock?
On a 24 hour clock this could be two different times, what would they be?

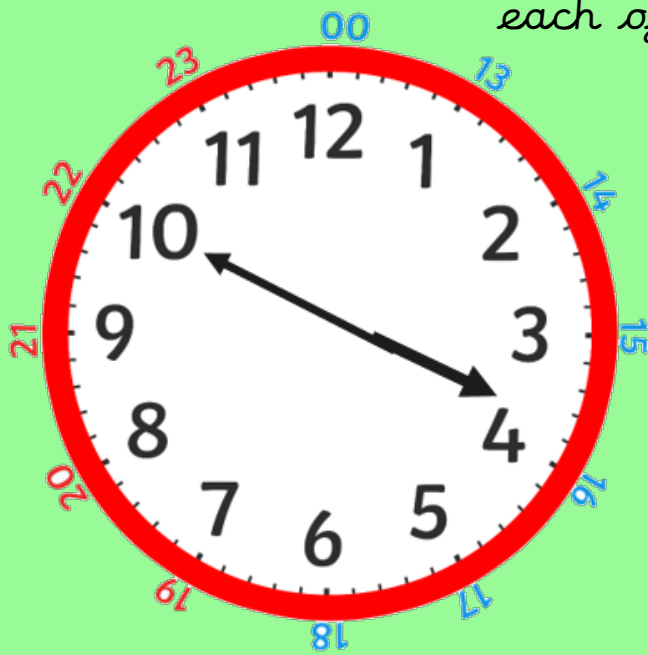
What two times would be displayed on each of the digital clocks?



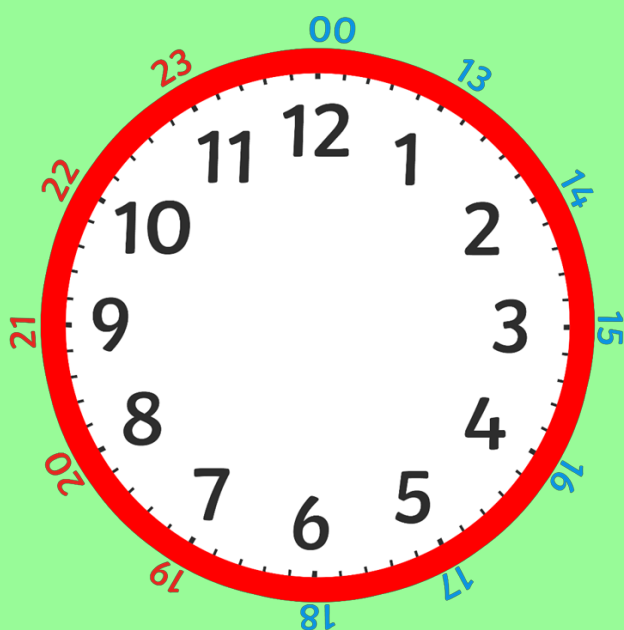
What two times would be displayed on each of the digital clocks?



What two times would be displayed on each of the digital clocks?



Change the clock hands and digits to make the analogue and digital clocks match each time.



12-Hour Time	24-Hour Time	12-Hour Time	24-Hour Time
2:15 a.m.		12:30 p.m.	
5:30 a.m.		6:00 p.m.	
9:00 a.m.		2:15 p.m.	
11:15 a.m.		4:30 p.m.	
6:30 a.m.		9:00 p.m.	
9:45 a.m.		7:45 p.m.	
11:30 a.m.		10:00 p.m.	
10:00 a.m.		8:30 p.m.	
8:15 a.m.		11:45 p.m.	
1:30 a.m.		2:45 p.m.	
2:45 a.m.		7:00 p.m.	

12-Hour Time	Programme	24-Hour Time
9:15 a.m.	Loopy Tunes	
10:00 a.m.	Pepper Pink	
10:30 a.m.	Film: Toy Tales	
11:45 a.m.	Sponge Ben Square Boots	
12:30 p.m.	Stewart Galaxy and the Crystal Jewels	
1:15 p.m.	Film: Beauty and the Bear	
2:30 p.m.	Bill the Builder	



12-Hour Time	24-Hour Time	12-Hour Time	24-Hour Time
2:15 a.m.	02:15	12:30 p.m.	12:30
5:30 a.m.	05:30	6:00 p.m.	18:00
9:00 a.m.	09:00	2:15 p.m.	14:15
11:15 a.m.	11:15	4:30 p.m.	16:30
6:30 a.m.	06:30	9:00 p.m.	21:00
9:45 a.m.	09:45	7:45 p.m.	19:45
11:30 a.m.	11:30	10:00 p.m.	22:00
10:00 a.m.	10:00	8:30 p.m.	20:30
8:15 a.m.	08:15	11:45 p.m.	23:45
1:30 a.m.	01:30	2:45 p.m.	14:45
2:45 a.m.	02:45	7:00 p.m.	19:00

12-Hour Time	Programme	24-Hour Time
9:15 a.m.	Loopy Tunes	09:15
10:00 a.m.	Pepper Pink	10:00
10:30 a.m.	Film: Toy Tales	10:30
11:45 a.m.	Sponge Ben Square Boots	11:45
12:30 p.m.	Stewart Galaxy and the Crystal Jewels	12:30
1:15 p.m.	Film: Beauty and the Bear	13:15
2:30 p.m.	Bill the Builder	14:30



Eva says the clocks are showing the same time of day.

Is she correct?


Explain how you know.

8:20



Is Teddy correct?

Prove it.



Teddy

If the time has an 8 in it, it has to be 8 o'clock.


Eva says the clocks are showing the same time of day.

Is she correct?

Explain how you know.

Eva could be correct. The clocks do both show 8:20 but the analogue clock doesn't show whether it is a.m. or p.m.

8:20



Is Teddy correct?

Prove it.

If the time has an 8 in it, it has to be 8 o'clock.

Teddy

Teddy is not correct because lots of different times have an 8 in it.
For example: 18:00, 8:30, 10:38 etc.