

# The Lake District National Park

An Information PowerPoint



# Aim

To learn about the Lake District National Park.

## Success Criteria

- I can locate the Lake District National Park on a map of the UK.
- I can explain what a National Park is.
- I can give examples of the challenges faced by the Lake District National Park and other National Parks in the UK.
- I can discuss ways in which we could help to combat these issues.
- I can state reasons why the Lake District National Park is a popular place for tourists.



# Where Is The Lake District National Park?



# The Lake District National Park

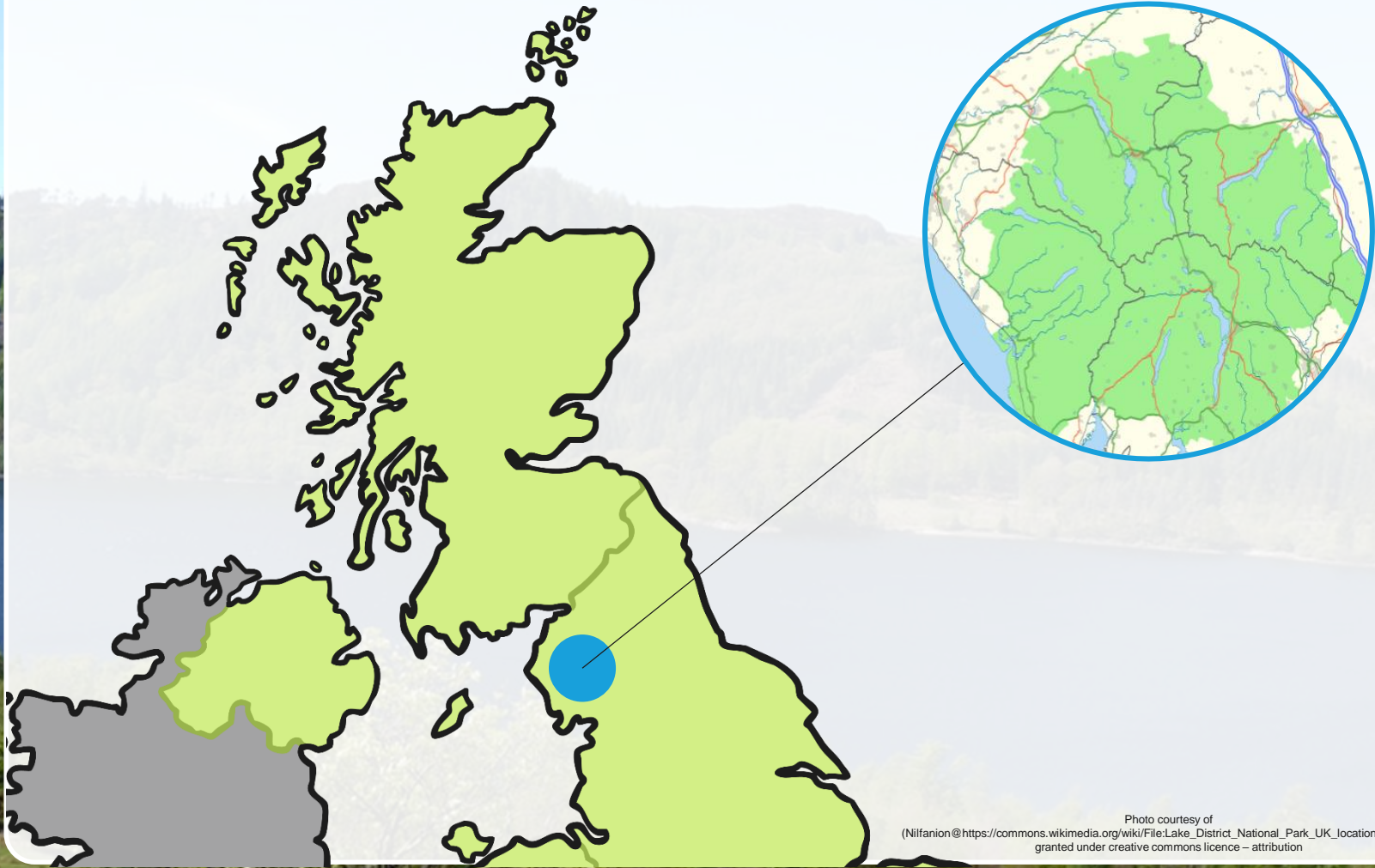


Photo courtesy of  
(Nilfanion@[https://commons.wikimedia.org/wiki/File:Lake\\_District\\_National\\_Park\\_UK\\_location\\_map.svg](https://commons.wikimedia.org/wiki/File:Lake_District_National_Park_UK_location_map.svg)) -  
granted under creative commons licence – attribution

# National Parks in the UK





# The Lake District National Park

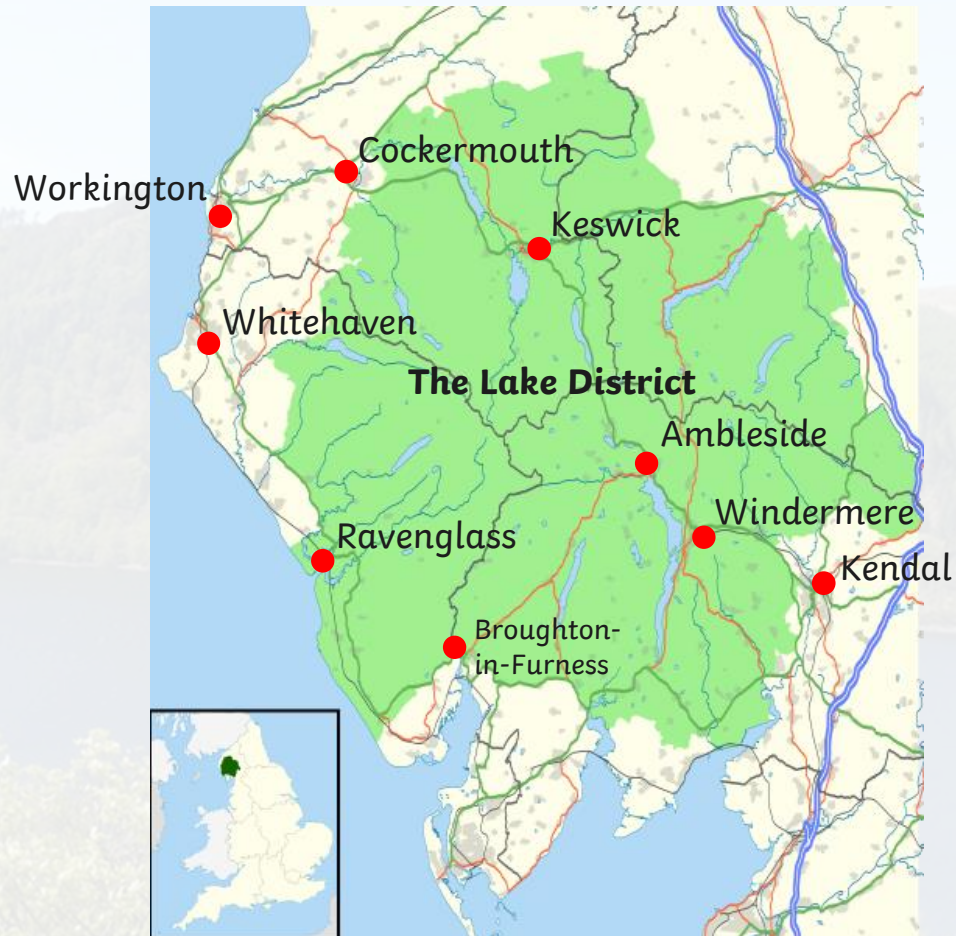


Photo courtesy of (Nilfanion@[https://commons.wikimedia.org/wiki/File:Lake\\_District\\_National\\_Park\\_UK\\_location\\_map.svg](https://commons.wikimedia.org/wiki/File:Lake_District_National_Park_UK_location_map.svg)) - granted under creative commons licence – attribution



# Popular Locations

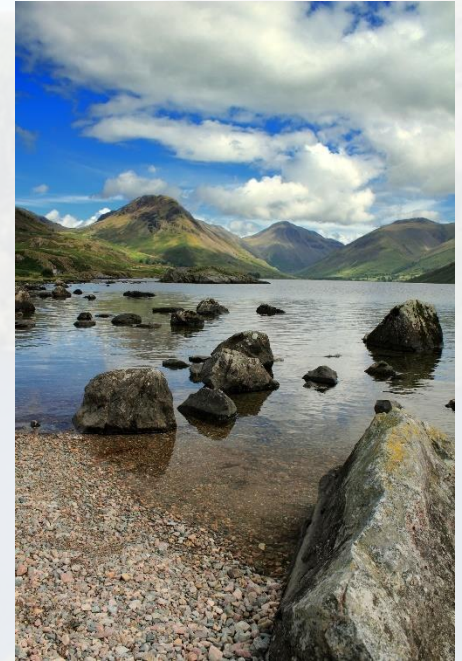


Photo courtesy of (walkinguphills@flickr.com) - granted under creative commons licence – attribution  
Photo courtesy of (Nick\_Rowland@flickr.com) - granted under creative commons licence – attribution



# What Is a National Park?

A National Park is a protected area because of wildlife, beautiful countryside or cultural heritage. The villages, towns and farms are also protected.

National Parks, such as the Lake District National Park, welcome visitors so that everyone can enjoy these areas of natural beauty.





# Impacts of Tourism

Tourism has positive and negative aspects for National Parks, including the Lake District.

## Good points

Tourists spend money which supports local shops and businesses.

The improved transport services for the tourists also benefit the locals.

Some of the money made from tourism can go back into conserving the National Park.

Jobs are created for local people.

## Bad points

Increased litter and pollution can occur.

Traffic congestion is common at holiday time.

Footpath erosion is caused by high numbers of tourists

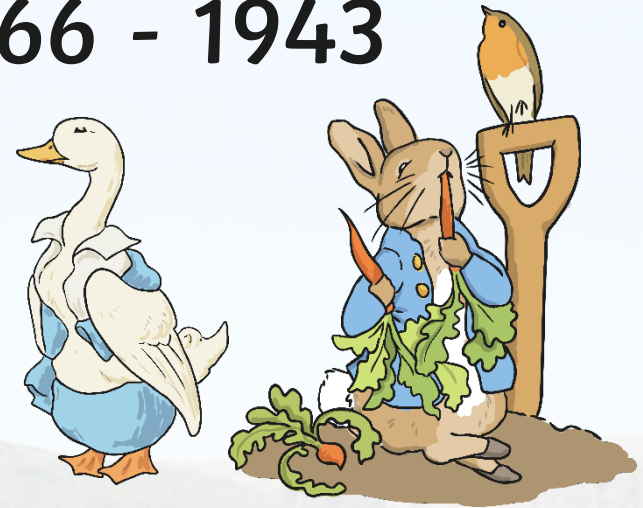
Work within the tourist industry is seasonal.

Every year, there are around 16 million visitors to the Lake District National Park

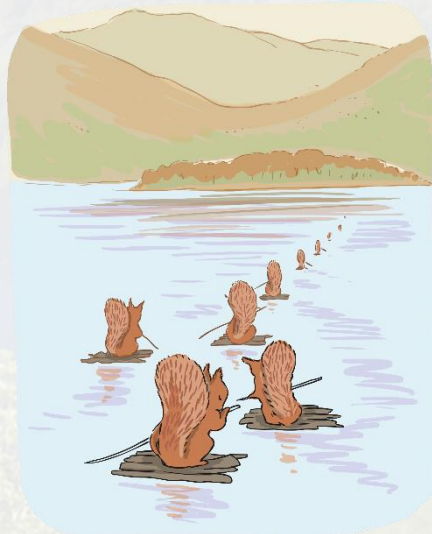
# Beatrix Potter 1866 - 1943

Beatrix Potters spent some of her childhood holidays in the Lake District.

It was these trips which inspired her writing.



Squirrel Nutkin sailed on Derwent Water and The Tale of Johnny Town-Mouse was set in Hawkshead.



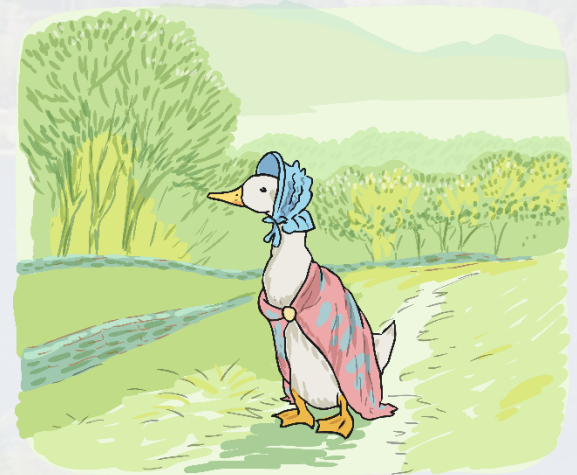
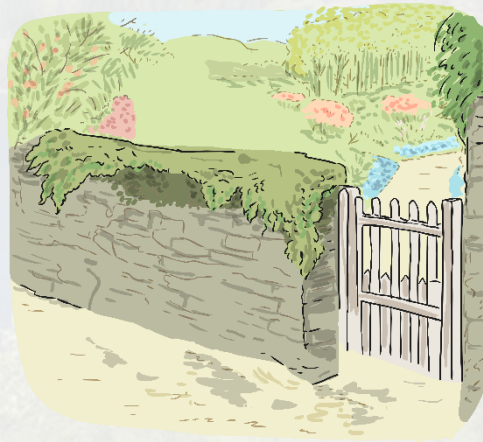


# Beatrix Potter 1866 - 1943



With the money she made through her publications, she bought property in the area.

When Beatrix died, she left several farms, sheep and thousands of acres of land to the National Trust.



# Youth Hostel Accommodation

A youth hostel is a place which provides cheap accommodation. The room in which you stay might be shared with other tourists. A youth hostel is useful accommodation if you are travelling with a large party. There are several hostels in the Lake District.





# History

The Romans had reached the Lake District by 100 AD. Military bases and roads were built to supply routes and protect the borders.

Norse people constructed monuments and earthworks marking significant places.

Words with Norse origin are gill, fell, dale and beck. Also, place names ending in '*-by*' mean village.

**Have a look for some Norse words on a map of the Lake District.**

# Climate Change

Our planet is warming up, leading to hotter and drier summers, more extreme weather and warmer winters.

The Lake District has recently faced some extreme weather.





# Climate Change

## Further impacts include:

- damage to woodland during stormy weather, affecting woodland habitats;
- certain species of plants may not survive due to the changing weather;
- drying of peat (which keeps carbon in the soil), releasing carbon into the atmosphere;
- falling water levels in the lakes during the warmer months.

# Communities

Those who live in the Lake District National Park, and call it their permanent home, face challenges too.

- Locals whose incomes are directly linked to tourism, such as hotel owners, rely on visitors coming to the park throughout the year.
- During the busier summer months, parking can become an issue for many local people.
- As the Lake District National Park is such a beautiful place, people want to buy holiday homes here. However, this pushes the house prices up in the area, making it very difficult for local people to own their own property.
- Currently around 15% of the homes in the Lake District are holiday homes. This means that many houses aren't occupied for most of the year, having a negative impact on local shops and businesses.



# Solutions



Keeping in mind the challenges faced by the Lake District National Park, what do you think could be done to help?

# Aim

To learn about the Lake District National Park.

## Success Criteria

- I can locate the Lake District National Park on a map of the UK.
- I can explain what a National Park is.
- I can give examples of the challenges faced by the Lake District National Park and other National Parks in the UK.
- I can discuss ways in which we could help to combat these issues.
- I can state reasons why the Lake District National Park is a popular place for tourists.



