

ch

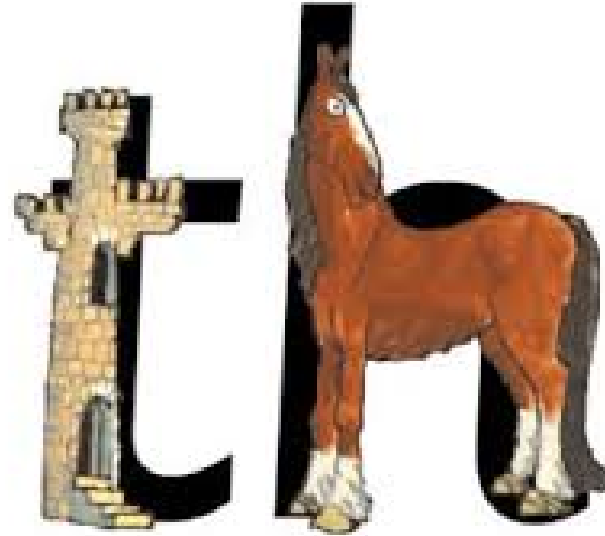
ch ch choo



sh

*push the sheep*

*th*



*thirty three*

ng



*thing on a string*

nk



*I think I stink.*

*ai*



*Snail in the rain.*

ee



What can you see?

*igh*



*fly high*



oa



goat in a boat

ow



*blow the snow*

oo



*poo at the zoo*

oo



look at a book

ar



Start the  
car.

or



*Shut the door.*

*nr*



*nurse with a purse*

ow



*brown cow*



*oi*



*Spoil the boy.*

ear



hear with your ear

*air*



*That's not fair!*

*ure*



*sure it's pure*

er



*a better letter*

qu



quick queen

ay



May I play?

ou



*Shout it out!*



*ie*



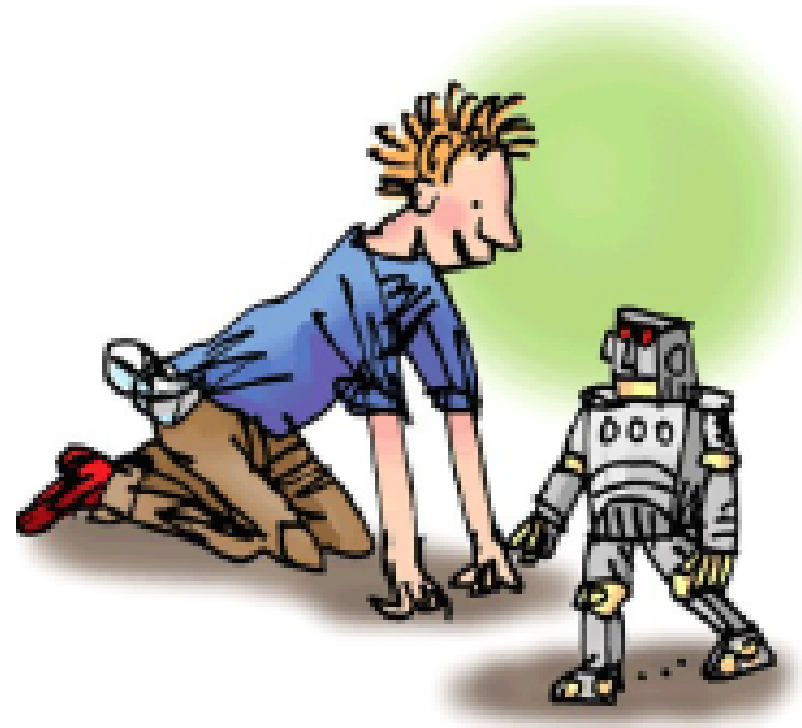
*bow tie*

ea



cup of tea

oy



toy for a boy

*ir*



*whirl and twirl*

*me*



*blue glue*

aw



yawn at dawn

wh



which whale

ph



phoebe does phonics



*ew*



*chew the stew*

*oe*

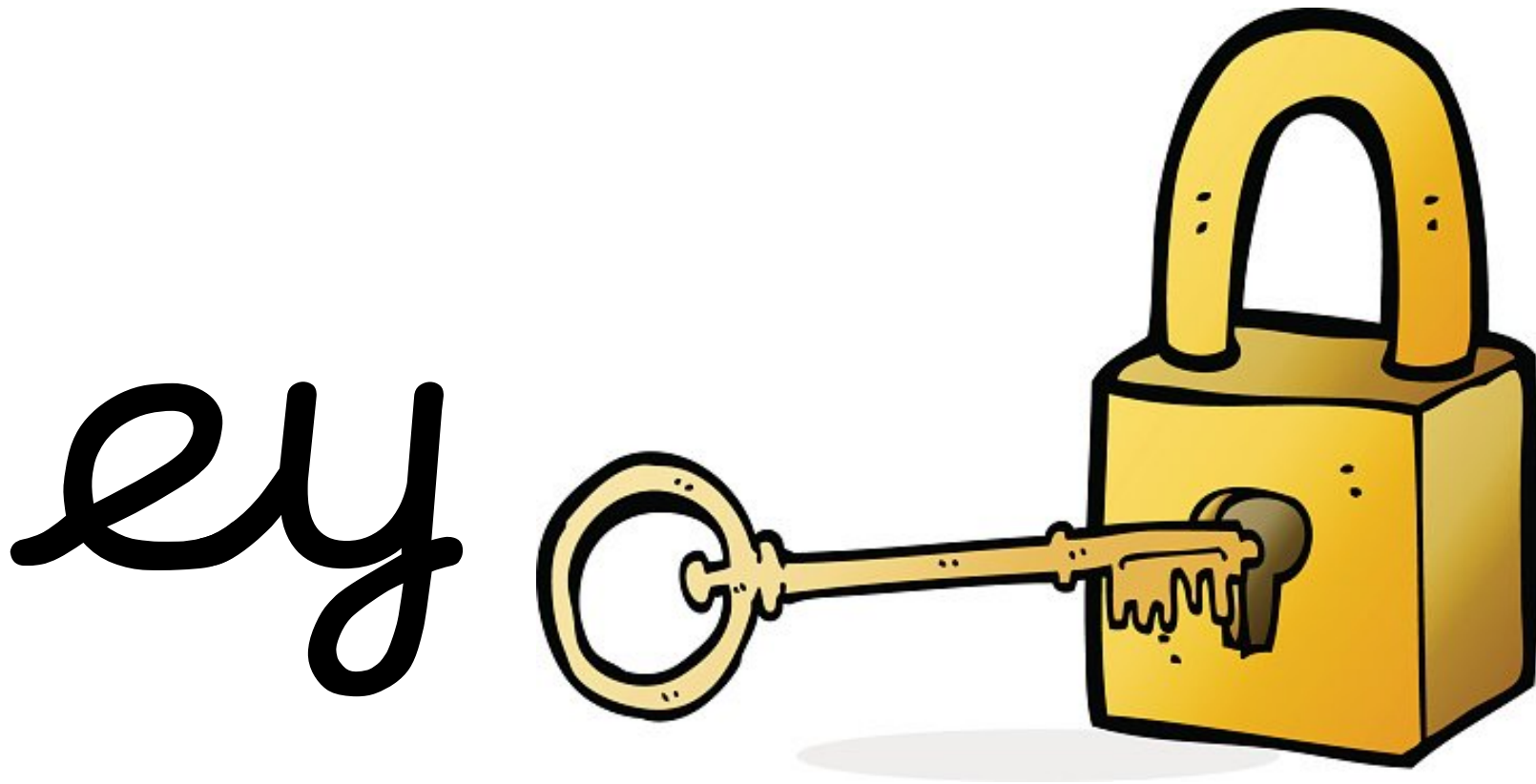


*ten toes*

*au*



*author in August*



*twist the key*

a\_e



make a cake

e\_e



*our team is complete*

*i\_e*



*nice smile*

o\_e



phoone hoome



me



huge brute

*tion*

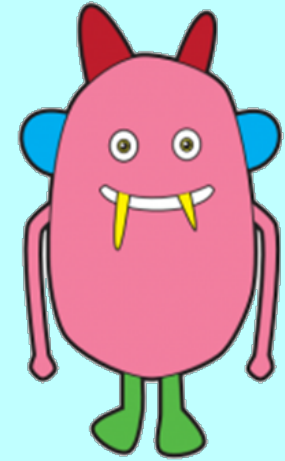
*Pay attention,  
it's a  
celebration.*



*Alien words...*

*mig*

*maips*



*jorst*

*broam*

*plieb*

*lighds*

*hube*

*swoots*

## Year 2 Common Exception Words

after  
again  
any  
bath  
beautiful  
because  
behind  
both  
break  
busy  
child  
children  
Christmas

class  
climb  
clothes  
could  
cold  
door  
even  
every  
everybody  
eye  
fast  
father  
find

floor  
gold  
grass  
great  
half  
hold  
hour  
improve  
kind  
last  
many  
mind  
money

most  
move  
Mr  
Mrs  
old  
only  
parents  
pass  
past  
path  
people  
plant  
poor

pretty  
prove  
should  
steak  
sugar  
sure  
told  
water  
whole  
who  
wild  
would

## Tricky words...

### Rainbow writing:

Write the following words using different colours on top of each other.



eye

even

every

Fill in the missing letters...

e \_ e

e \_ en

e \_ e \_ y

Now write each word into a sentence.

*Today we're looking at some different homophones:*

## To, Too and Two Homophones



# Homophones

These words all sound the same, but they are spelt differently, and have different meanings.

**to**

**too**

**two**





# to

'to' is a preposition when it comes before a noun.

The children are going to the shop.

They went to London.



'to' is usually (but not always) used before the infinitive form of a verb. The infinitive form of a verb just means a verb in its most basic form.



I need to go to work today.

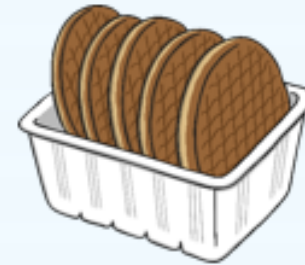
I'm going to tidy the house tomorrow.

'to' has lots of meanings, but if 'too' and 'two' don't make sense, you probably need to use 'to'!

# too

'too' can mean 'as well' and 'also'.

May I come shopping too?  
I like cakes, but I like biscuits too.



'too' can also be used to show excess.



I have eaten too much food.  
The bag was too heavy.

two

'two' means the number '2'.

There are two dogs running in the park.



I have two brothers and one sister.



# to, too and two

Two children wanted to catch the bus to school, but they were too late.

