

Digestive System Parts

A stylized, cartoonish illustration of the human digestive system. The background is a warm, orange-toned gradient. The digestive organs are depicted in various shades of orange, red, and brown. The esophagus is a vertical tube in the center. The stomach is a large, rounded organ below the esophagus. The liver is a large, dark brown organ to the left of the stomach. The pancreas is a smaller, light brown organ below the stomach. The small intestine is a long, coiled tube below the stomach. The large intestine is a larger, more complex coiled tube at the bottom. The text "Digestive System Parts" is written in a bold, white, rounded font with a red outline, centered over the illustration. A small "twinkl" logo is visible on the large intestine.

twinkl

Thursday 7th January 2021

LO: To describe the simple functions of the basic parts of the digestive system in humans

Success Criteria

- I can name parts of the digestive system.
- I can identify parts of the digestive system.
- I can construct the digestive system.

Task 1 (pre-assessment)

Draw lines joining up the definition to the word.

Thursday 7th January 2021 (pre-assessment)
LO: To use scientific language to communicate ideas. Revisit: _____
Match up the vocabulary to its correct definition by colouring the boxes.

Canine	The process inside an animals body that digests food
Intestines	A muscular tube that connects the throat and stomach
Incisor	A pointed tooth in between the incisors and premolars of a mammal
Stomach	The hard outer surface layer of your teeth that protects them against tooth decay
Oesophagus	An internal organ that secretes acid to digest the food
Digestion	A narrow edged tooth at the front of the mouth, adapted for cutting.
Enamel	There are two of them, the large intestine and the small intestine. These carry your waste.

Thursday 7th January 2021 (pre assessment)
LO: To use scientific language to communicate ideas. Revisit: _____
Match up the vocabulary to its correct definition by colouring the boxes.

Canine	The hard outer surface layer of your teeth that protects them against tooth decay
Intestines	A pointed tooth in between the incisors and premolars of a mammal
Incisor	An internal organ that secretes acid to digest the food
Stomach	A narrow edged tooth at the front of the mouth, adapted for cutting.

Digestive System

Humans digest food. They have a digestive system that allows them to do this.

What do you think digest/digestive system mean?

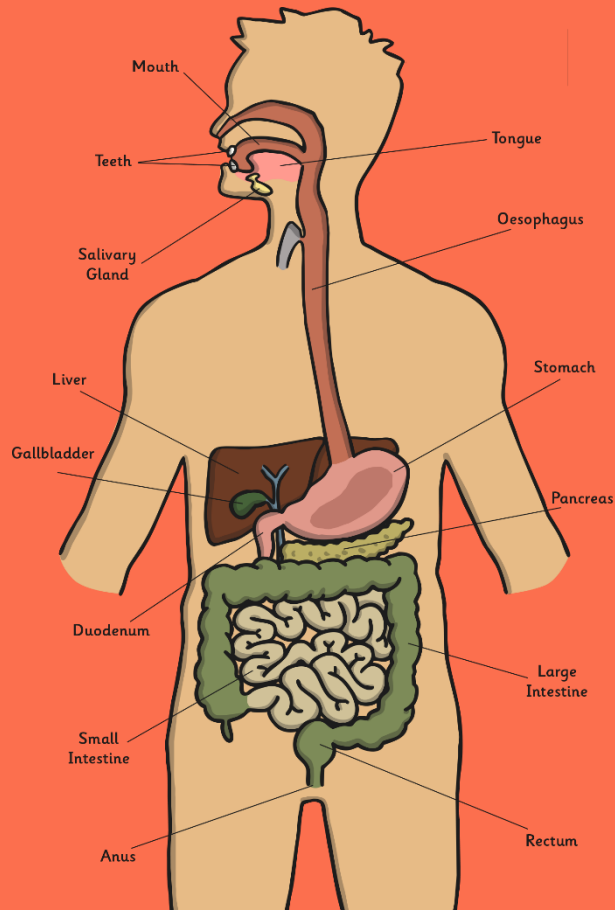
Click here for
a definition of
digest

Click here for
a definition of
**digestive
system**

What is digestion?

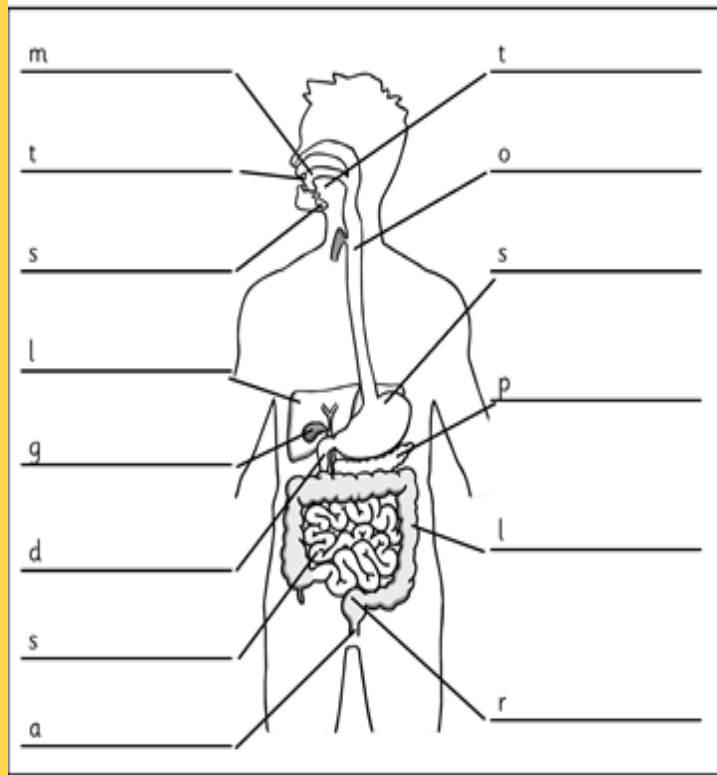
- Digestion is the act of softening & changing food so that the body can absorb it for energy & growth.
 - Have a drink of water and trace down your throat to where you think it travels.
 - It takes 10 seconds for food to reach your stomach after being swallowed!
 - Let's check if you were correct! Now we are going to recreate this digestive system together.
- <https://www.bbc.co.uk/bitesize/topics/z27kng8/articles/z9wk7p3>
 - <https://www.youtube.com/watch?v=Og5xAdC8EUI>

Digestive System Parts



Mouth
Tongue
Teeth
Salivary glands
Oesophagus
Stomach
Duodenum
Small intestine
Large intestine
Gallbladder
Pancreas
Liver
Rectum
Anus

Naming Parts of the Digestive System



Can you name all the parts of the digestive system?

Task:

You will be given a sheet with key words to name and label the different parts of the digestive system.

Think about the following to help you:

How do humans digest food?

How does food travel through the body?

What parts of the body are involved?

(Hint: it's not just the ones on the outside that you can see!)

Digestive System Parts

Swap your sheet with your partner.

Peer mark their work:

- Were there any obvious body parts you missed out?
- Were there any body parts that you were surprised by?
- Game: Who Wants To Be a Millionaire

