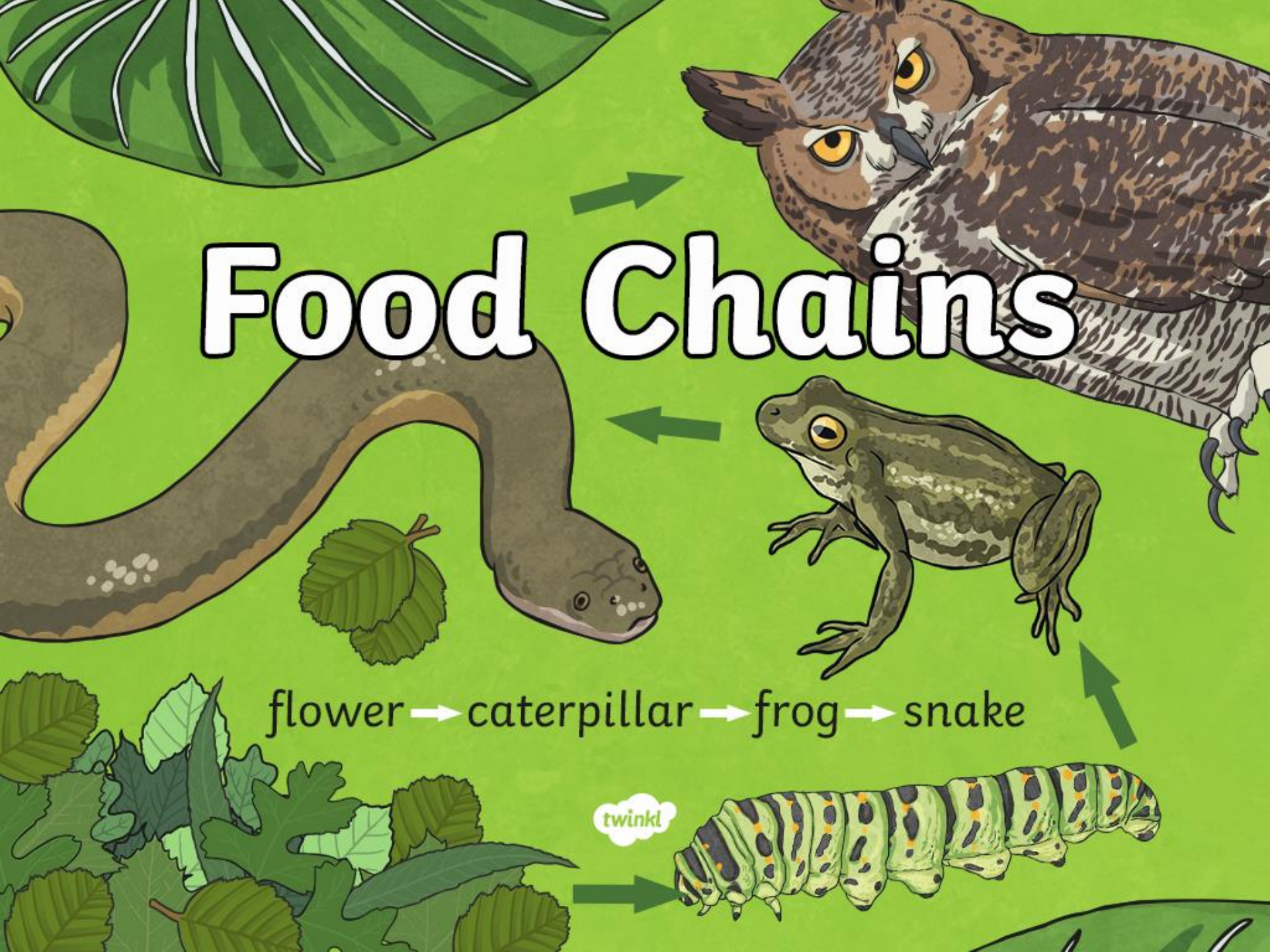


Food Chains

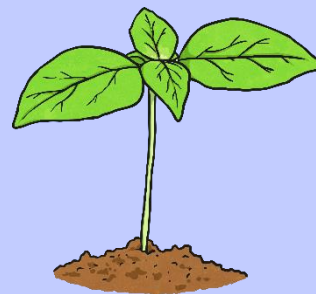


Key Words

consumer



producer



prey



predator



Thursday 4th February 2021

LO: To construct and interpret
a variety of food chains,
identifying producers,
predators and prey

Odd One Out

Which one is the odd one out and why?
There is no right or wrong answer!
Could you give a reason for each living thing?



Hawk



Fox



Bird



What do we all
have in
common?

Snail



Badger



Slug



Cabbage



Hedgehog

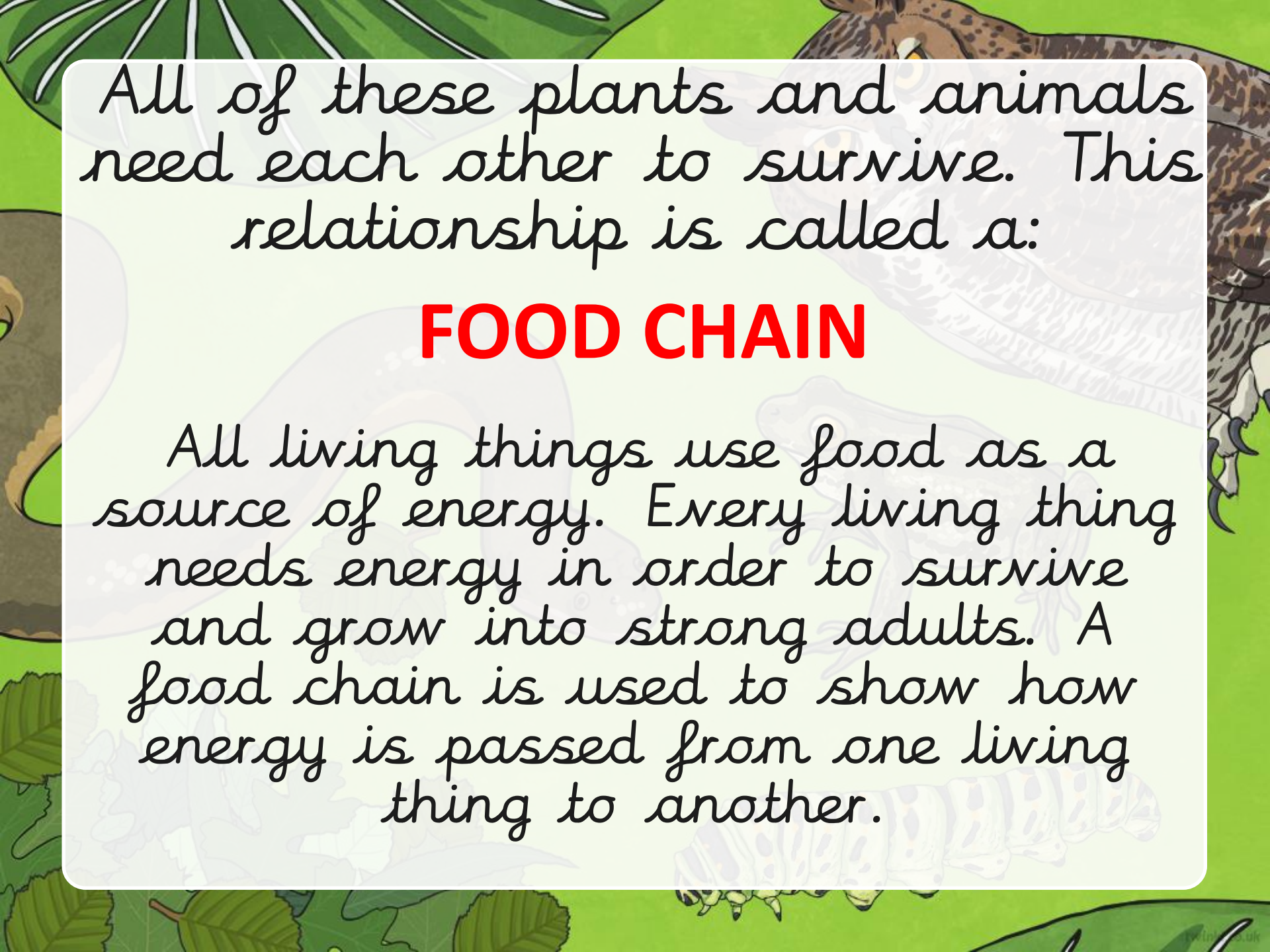




What do we all have in common?

There are two things that all these living things have in common:

- 1) We all need food for energy and to grow.
- 2) We are all hungry!



All of these plants and animals need each other to survive. This relationship is called a:

FOOD CHAIN

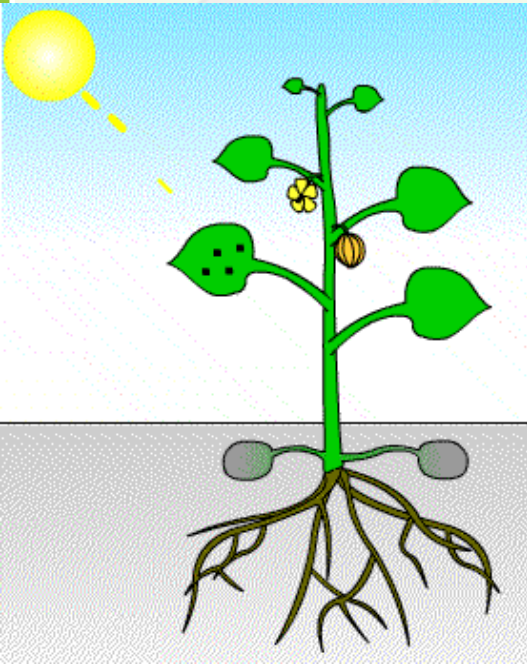
All living things use food as a source of energy. Every living thing needs energy in order to survive and grow into strong adults. A food chain is used to show how energy is passed from one living thing to another.

All energy comes from the sun.

Plants use the sun's energy to produce their own food.

This process is called
PHOTOSYNTHESIS

In Food Chains, we call plants **PRODUCERS** because they produce their energy from the sun directly.



Many animals eat only plants - they are vegetarians.



Animals that only eat plants have a special name; they are called

HERBIVORES.

In Food Chains, we call herbivores **PRIMARY CONSUMERS** because they are the first animal to **CONSUME** (eat) the plants.

The next group, called **SECONDARY CONSUMERS** can eat plants or animals. These animals are called **SECONDARY CONSUMERS** as they eat the Primary Consumers.

Animals that eat only meat have a special name; they are called **CARNIVORES**



Animals that eat both plants and meat have a special name; they are called **OMNIVORES**



Making a Food Chain



Producer

Which of these plants and animals do you think are the:

- 1) Producer
- 2) Primary Consumer
- 3) Secondary Consumer



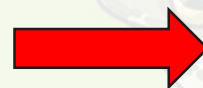
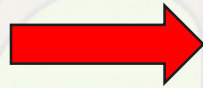
Primary Consumer

Secondary Consumer



Making a Food Chain

We use arrows to show which plant or animal is food for. For example:



A cabbage is
food for a
rabbit

A rabbit is
food for a
fox

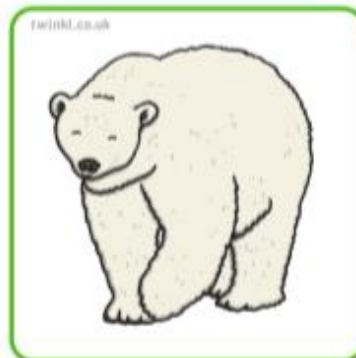
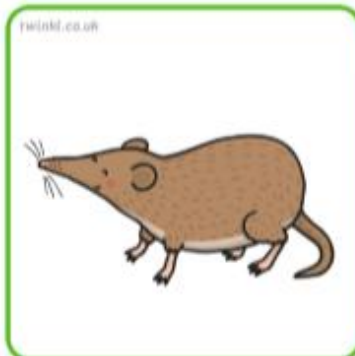
Living things that are hunted and eaten are called

PREY

Animals that hunt and eat meat are called

PREDATORS

Use the cards to make food chains



Food Chain Riddle

A farmer has a fox, a rabbit, and a lettuce and sits on the edge of a river. He has a small raft capable of carrying only himself and one item at a time, but without his supervision the fox will eat the rabbit, and the rabbit will eat the lettuce. How can he successfully transport all goods from one side of the river to the next without losing the lettuce or rabbit? The dilemma, of course, is true regardless of which side of the river they are on and there is no other way across.

Answer

First the farmer takes the rabbit across and returns to the fox & cabbage. Next, the farmer takes the cabbage, but when he arrives to the other side with the rabbit, he leaves the cabbage and takes the rabbit back on the raft with him to return and get the fox. He exchanges the rabbit for the fox and returns to drop the fox off with the cabbage, and finally goes back to get the rabbit.

Main Task

Complete the food chain worksheet.

Thursday 11th February 2021

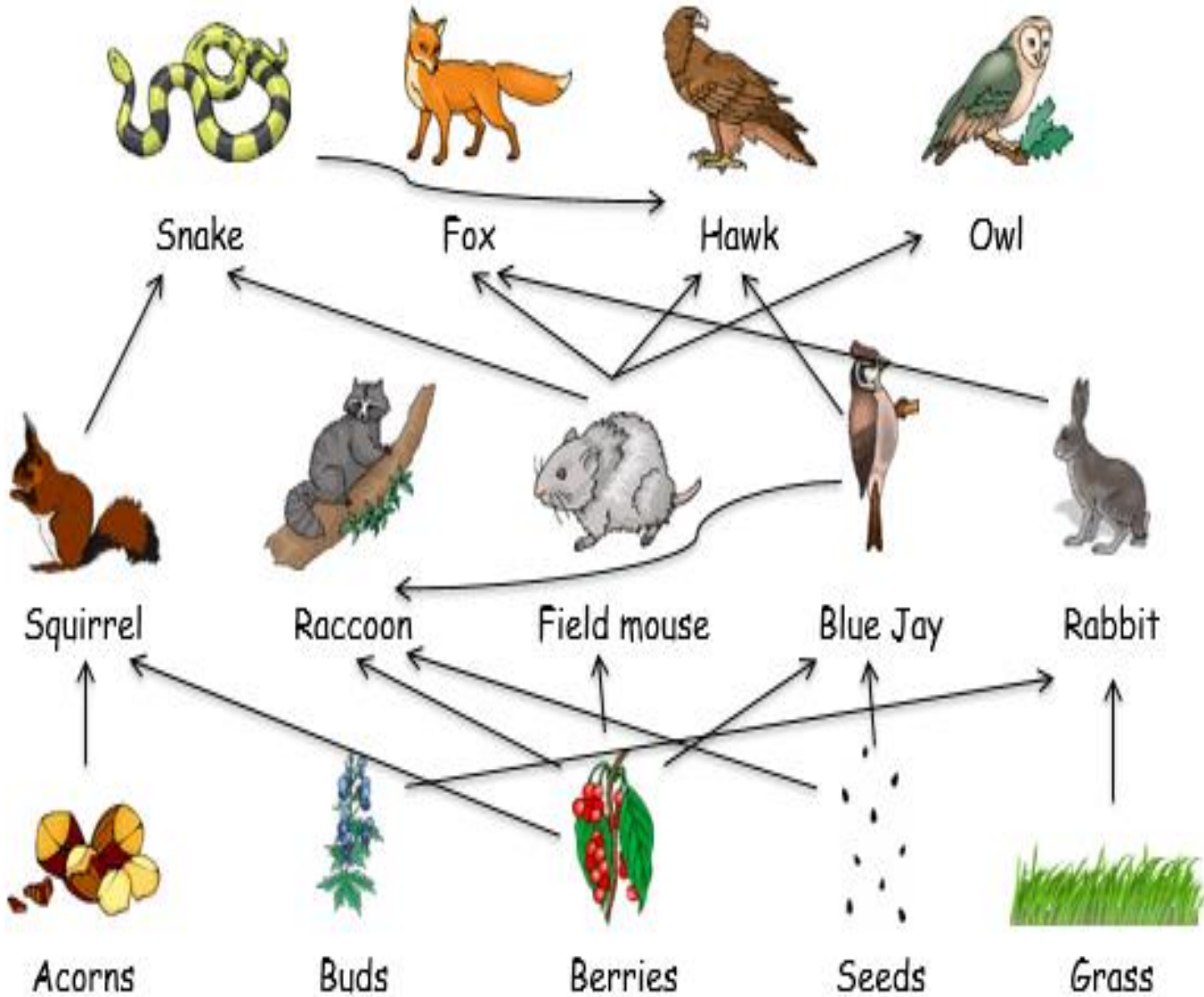
LO: To construct and interpret a variety of food chains, identifying producers, predators and prey



Create your own food chains below. Label the plants and animals with producer, primary consumer and secondary consumer.







Secondary consumers

Primary consumers

Producers



twinkl

