

Thursday 28th January 2021

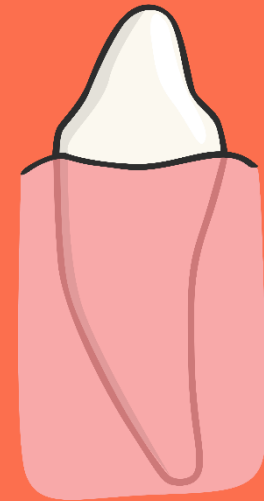
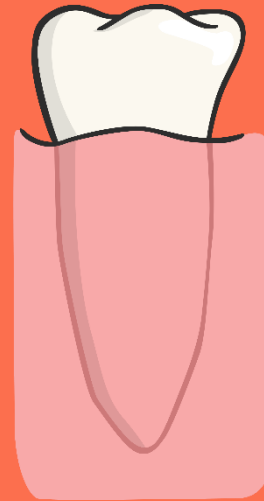
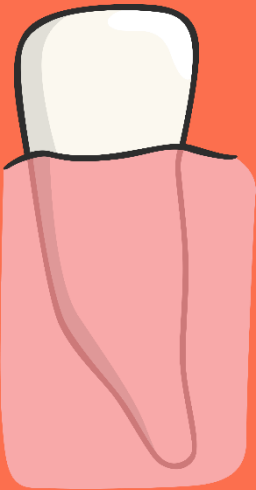
LO: To find out what damages teeth and how to look after them

Success Criteria

- I can suggest what might damage our teeth
- I can suggest how we can look after our teeth
- I understand how to plan a fair test

Types Of Teeth

Match the types of teeth with their names.



Molar

Canine

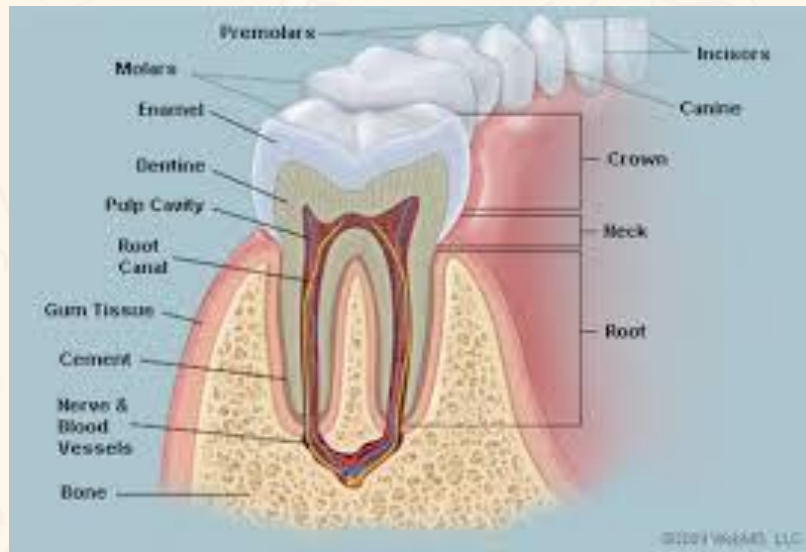
Incisor

Premolar

Investigation: Which liquid does the least damage to eggshells?

The eggshell protects the egg a bit like the enamel on our tooth protects the living part inside.

Brainstorm a list of things we like to drink



We are going to fill screw top jars/cups with cling film over the top, with enough liquid to cover the hard-boiled egg.






We will use these liquids: water, cola, milk, vinegar, orange juice and submerge the egg in the liquid for one week.

- How can we make this a fair test?



Each day we will record our results for one week

Year 4 investigation: To find out what damages teeth and how to look after them

	Friday	Monday	WEEKEND	Tuesday	Wednesday	Thursday
Milk 						
Water 						
Orange juice 						
Vinegar 						
Cola 						



Year 4 investigation: To find out what damages teeth and how to look after them

	Friday	Monday	WEEKEND	Tuesday	Wednesday	Thursday
Milk 						
Water 						

Main Task

Year 4 conducted an experiment to find out the effects of liquids on the teeth. We investigated this by submerging hard boiled egg in jars filled with different types of liquid. We left them for a week and observed the change in the egg shells which represents the teeth's enamel.

Results

Type of Liquid	Condition of the egg

Conclusion

I found out that the liquid that does the most damage to the egg shells was..... because

.....

.....

.....