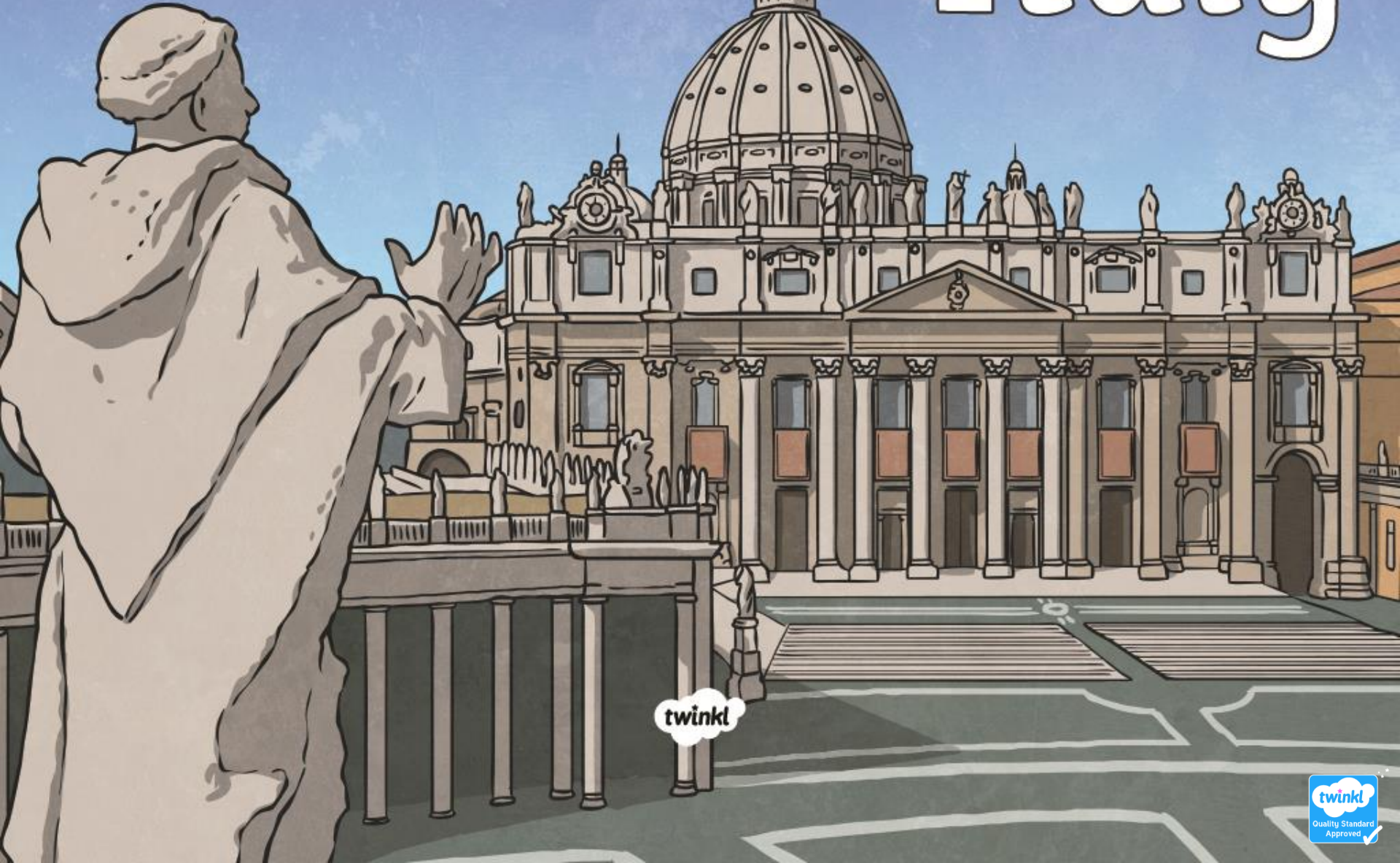


Italy



twinkl

L.O. to be able to use maps to describe
and locate Italy's tourist attractions

What is it like?

- Italy is a country in Southern Europe. The country is located on a peninsula in the Mediterranean Sea.
- Italy borders six countries: France, Austria, Switzerland, Slovenia, Vatican City and San Marino.
- A flight to Italy's capital city Rome takes roughly 2.5 hours from London/England
- Italy is easy to recognise on any world map, as the country is shaped like a high-heeled boot, as you can see on the map.



Research

Today you are going to be using your computing skills to research Italy and its famous landmarks.

You will need to find out about:

- Colosseum
- Leaning Tower of Pisa
- Trevi Fountain
- Grand Canal
- Pompeii ruins
- Amalfi coast

Include research facts about:

- What it is and used for
- When it was built
- Height
- Material it is made of
- Any other key facts

Research

Use the research sheet below to record your facts about Italy's landmarks:

<i>Italy landmark</i>	<i>What is it? What is it used for?</i>	<i>Height</i>	<i>Material</i>	<i>Any other key facts e.g. where is it?</i>
<i>Colosseum</i>				
<i>Leaning Tower of Pisa</i>				
<i>Trevi fountain</i>				
<i>Grand Canal</i>				
<i>Pompeii ruins</i>				
<i>Amalfi coast</i>				