

## Clue for Digit 1

How many of these are types of human teeth?

canine

clavicle

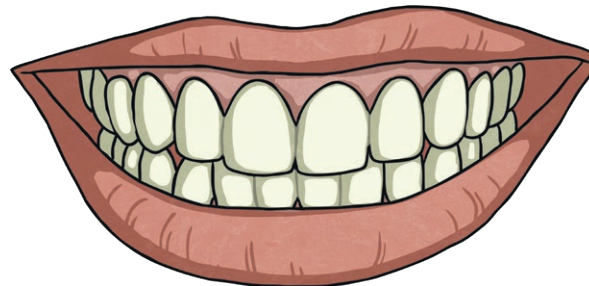
pelvis

molar

premolar

femur

incisor

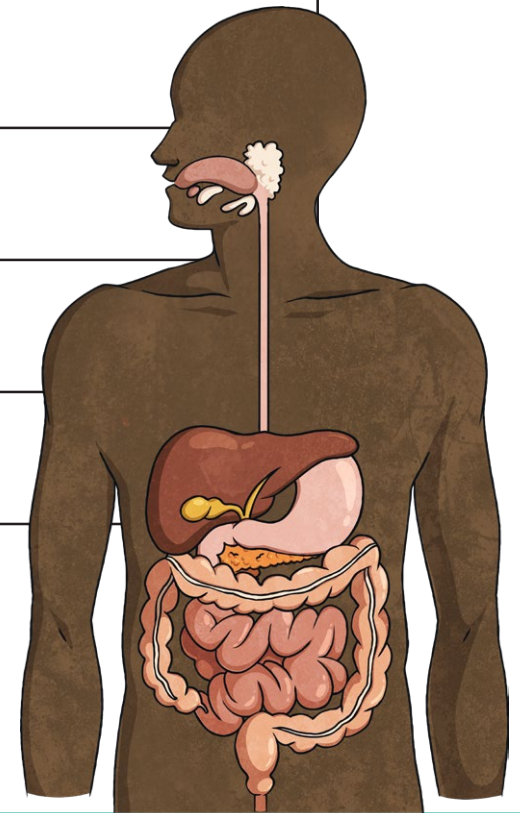


The number of types of human teeth is the first digit on the keypad.

## Clue for Digit 2

Which of these describe the correct order that food travels through the digestive system?

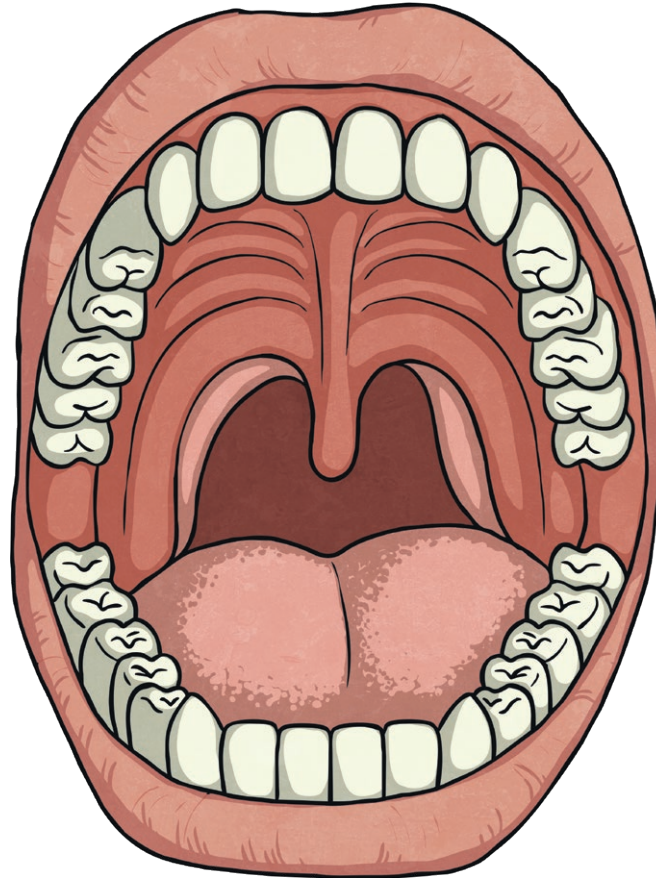
1	mouth, oesophagus, stomach, rectum, large intestine
2	mouth, oesophagus, stomach, large intestine, rectum
3	mouth, oesophagus, rectum, large intestine, stomach
4	oesophagus, mouth, large intestine, stomach, rectum
5	mouth, large intestine, oesophagus, rectum, stomach



The number showing the correct order is the second digit for the keypad.

## Clue for Digit 3

How many molars does a human without wisdom teeth have?



The number of molars found in a humans (without wisdom teeth) is the third digit on the keypad.

## Clue for Digit 4

Read the clues about teeth and write the answer with one letter in each box.

What are the pointy, sharp teeth that help us tear food when eating?

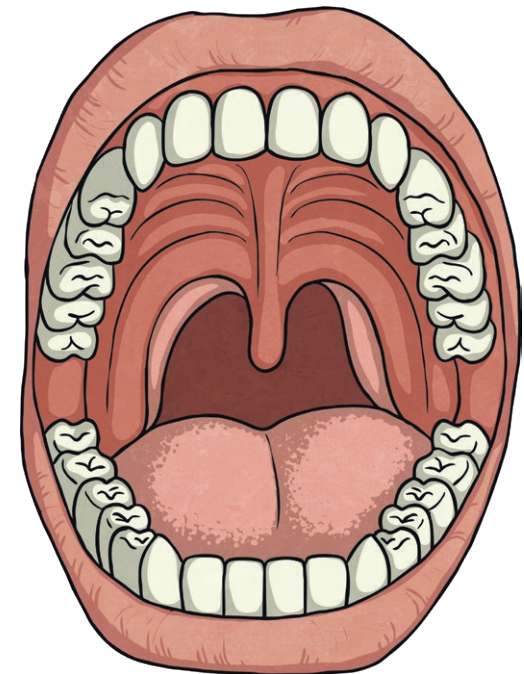
--	--	--	--	--	--

Which teeth are the last four a person may get?

--	--	--	--	--	--

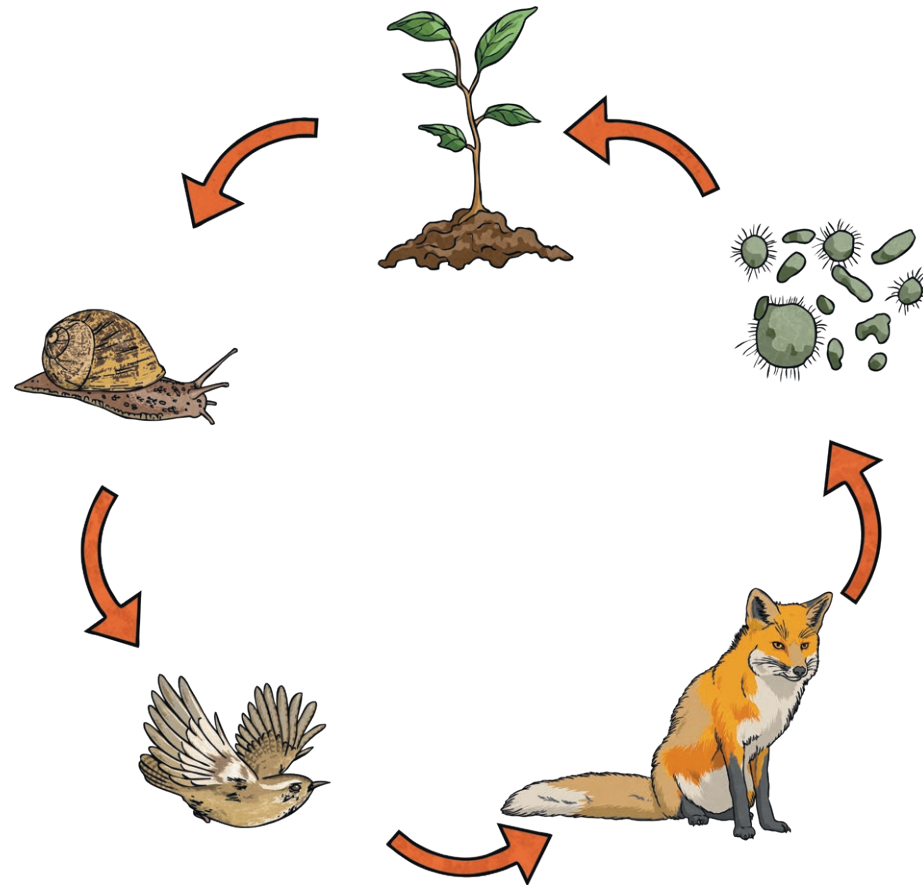
What is the tough substance that covers the crown of a tooth?

--	--	--	--	--	--



Rearrange the letters in the boxes to spell the fourth digit on the keypad.

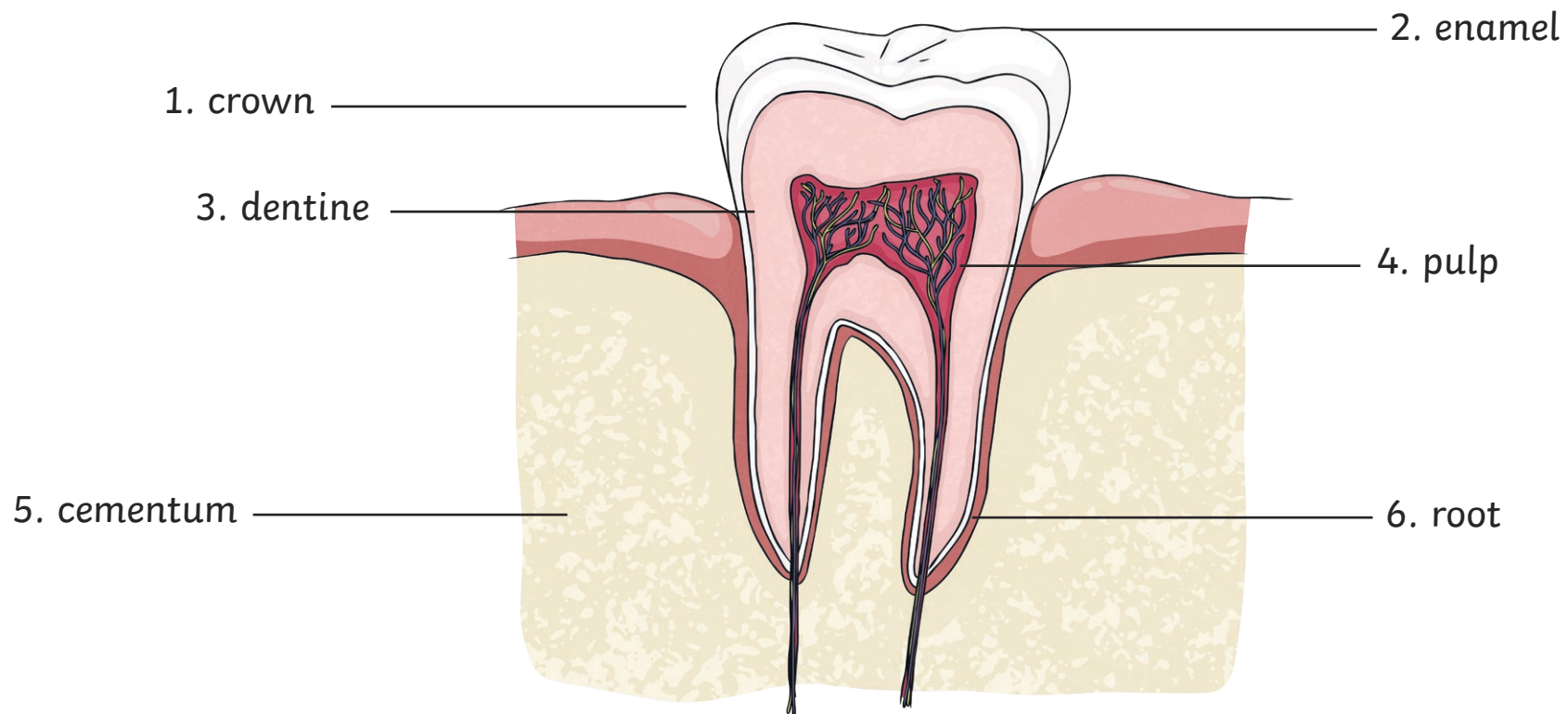
What do all food chains start with?



The number of letters in this word is the fifth digit on the keyboard.

## Clue for Digit 6

Which label is incorrect?



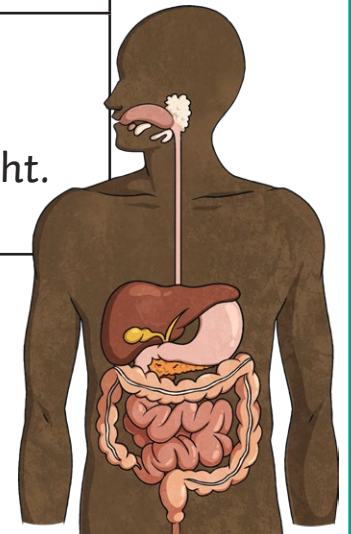
The number of the incorrect label will give you the sixth digit on the keypad.

## Clue for Digit 7

How many of these are processes that the digestive system does?

It helps chew and swallow food.	It pumps blood around the body.	It produces bile, which helps our body to absorb fats.	It protects your organs.
It pushes air out of the lungs.	It breaks down food into smaller pieces.	It tastes food.	It sends information to the optic nerve.
It removes toxins.	It processes images.	It helps humans to move.	It keeps humans upright.

The number of things from above that the digestive system does will give you the seventh digit on the keypad.



## Clue for Digit 8

Add these together:

The number of incisor teeth an adult has

+

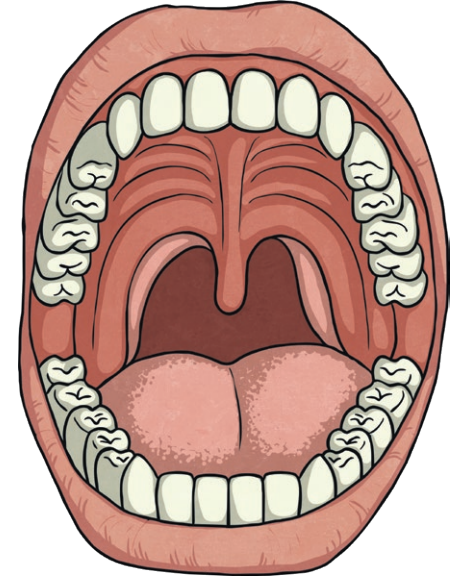
The number of canine teeth an adult has

+

The number of premolar teeth an adult has

+

The number of molar teeth (including wisdom teeth) an adult has



Finally, add the two digits of the answer to get the eighth digit on the keypad.