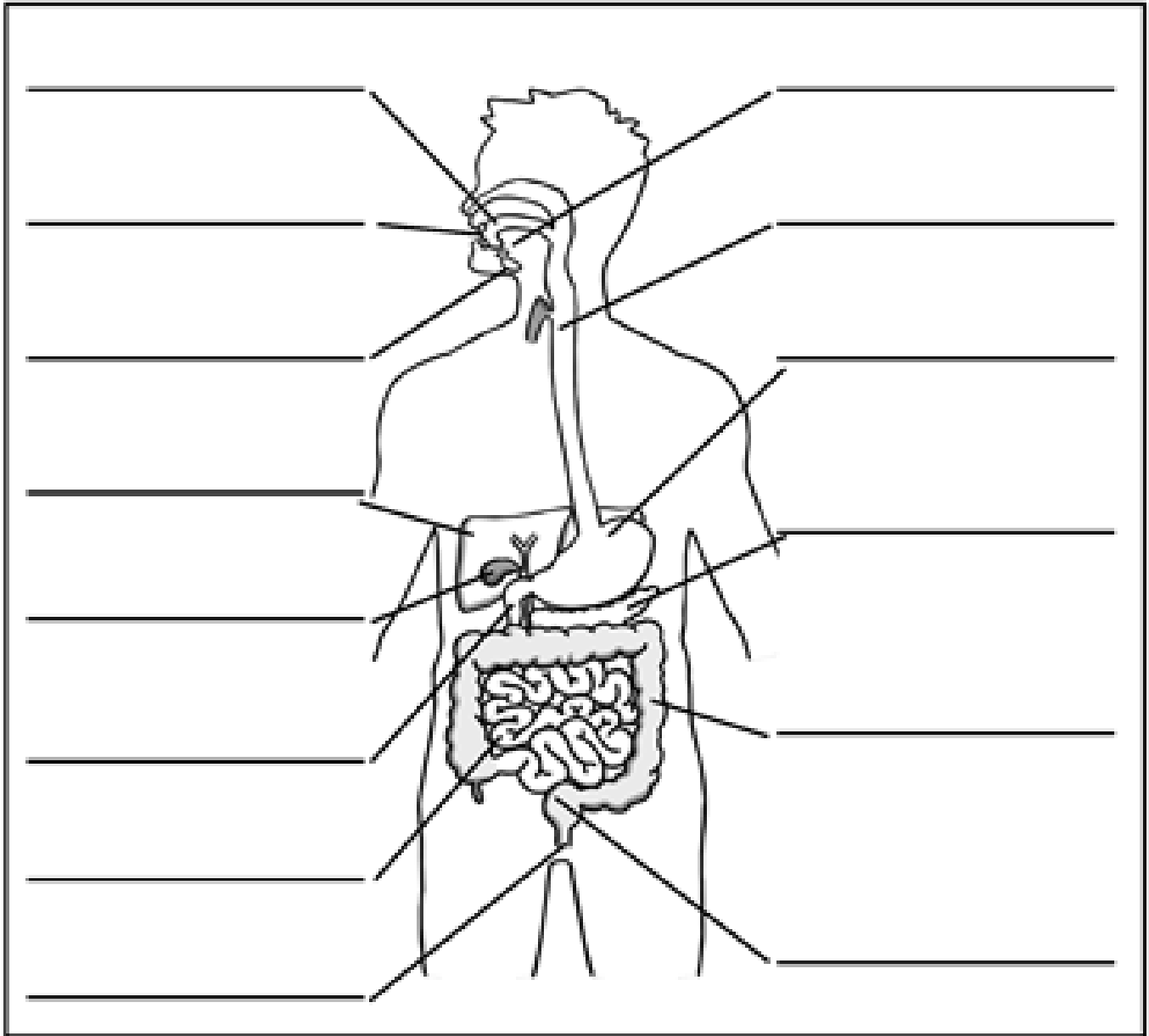


Thursday 7th January 2021

LO: To describe the simple functions of the basic parts of the digestive system in humans



Key words: mouth, tongue, teeth, salivary glands, oesophagus, stomach, duodenum, small intestine, large intestine, gallbladder, pancreas, liver, rectum, anus.

Next Step: Which organ do you think is the most important for the digestive system? Explain why you think this.
