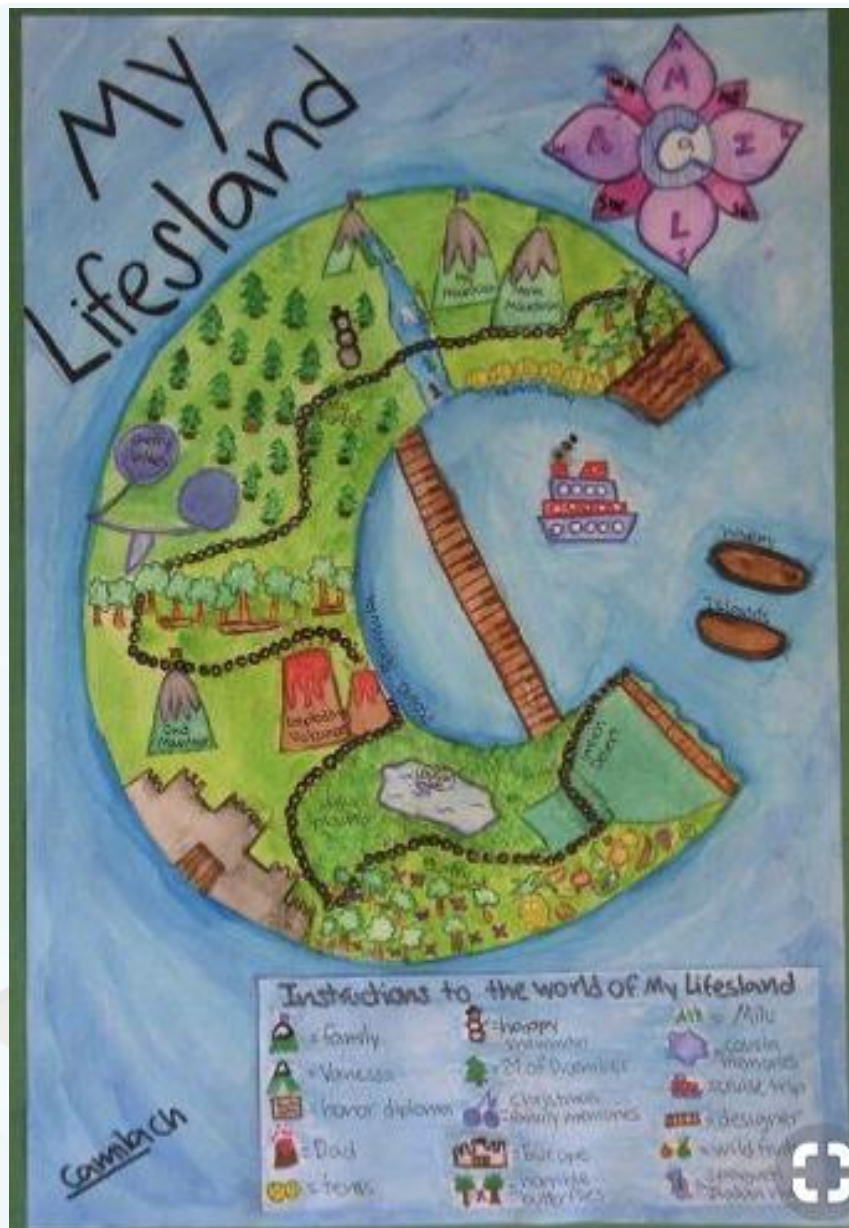



L.O. to create an  
autobiographical island  
map



You are going to design your very own island map using different landforms to represent your family, friends, school, hobbies etc.

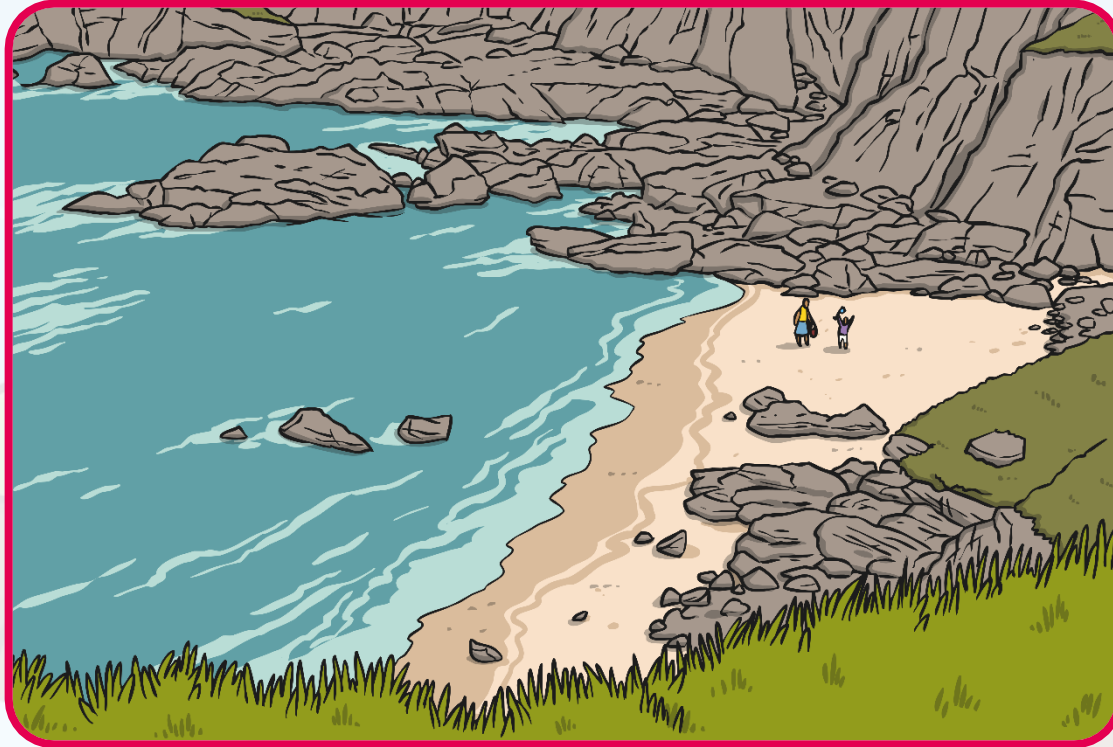


**Look at the following slides to  
see the different types of  
landforms.**

**You can then use these to create  
your own lifesland!**

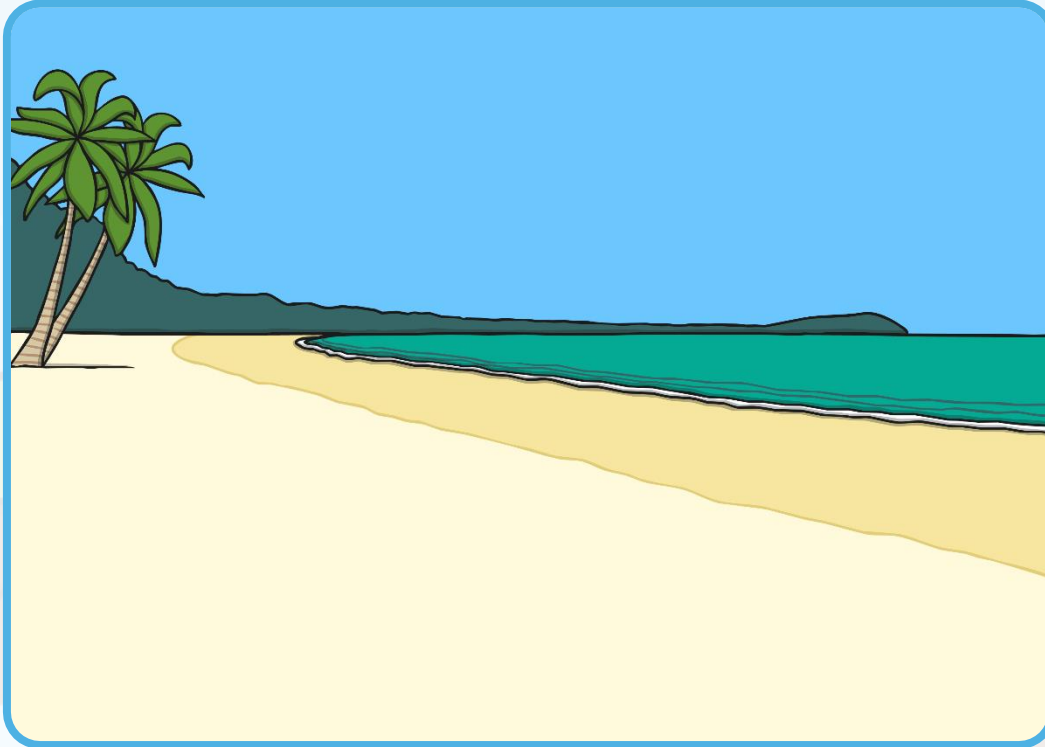
# Bay

I am a large body of water partly surrounded by land.  
I am connected to the ocean.



# Beach

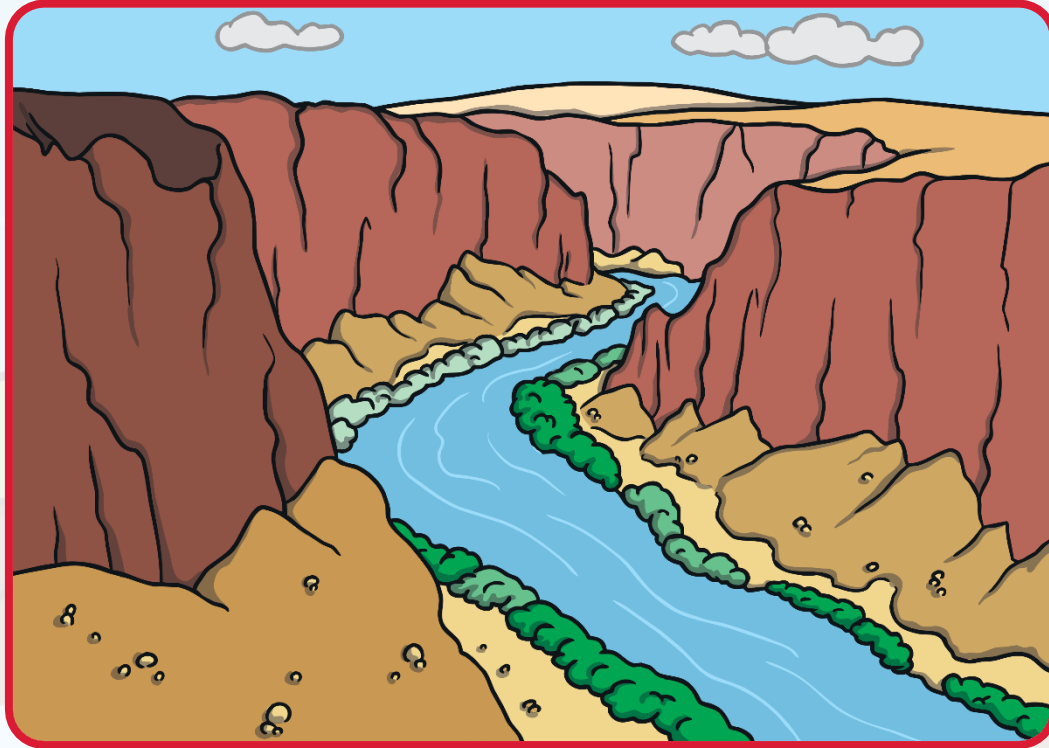
I am the shore of a body of water.  
I am covered by sand, gravel, or rock fragments.





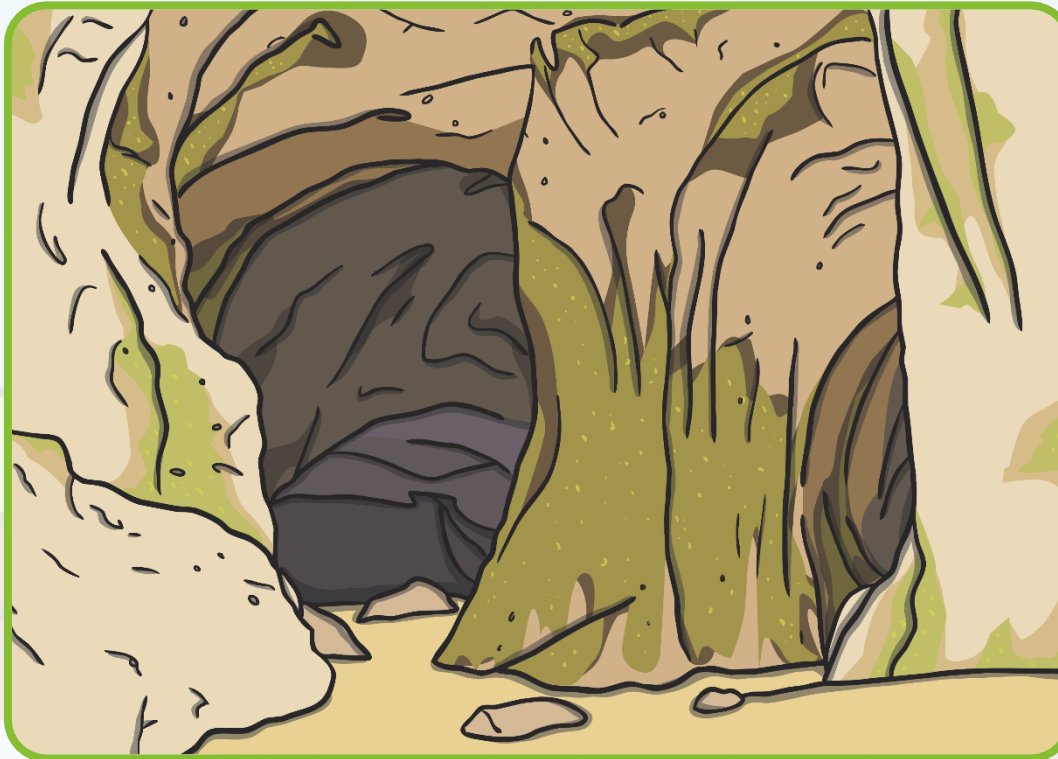
# Canyon

I am formed from a flowing river moving away sand and dirt.  
I am a deep cut into the earth, with tall steep walls.



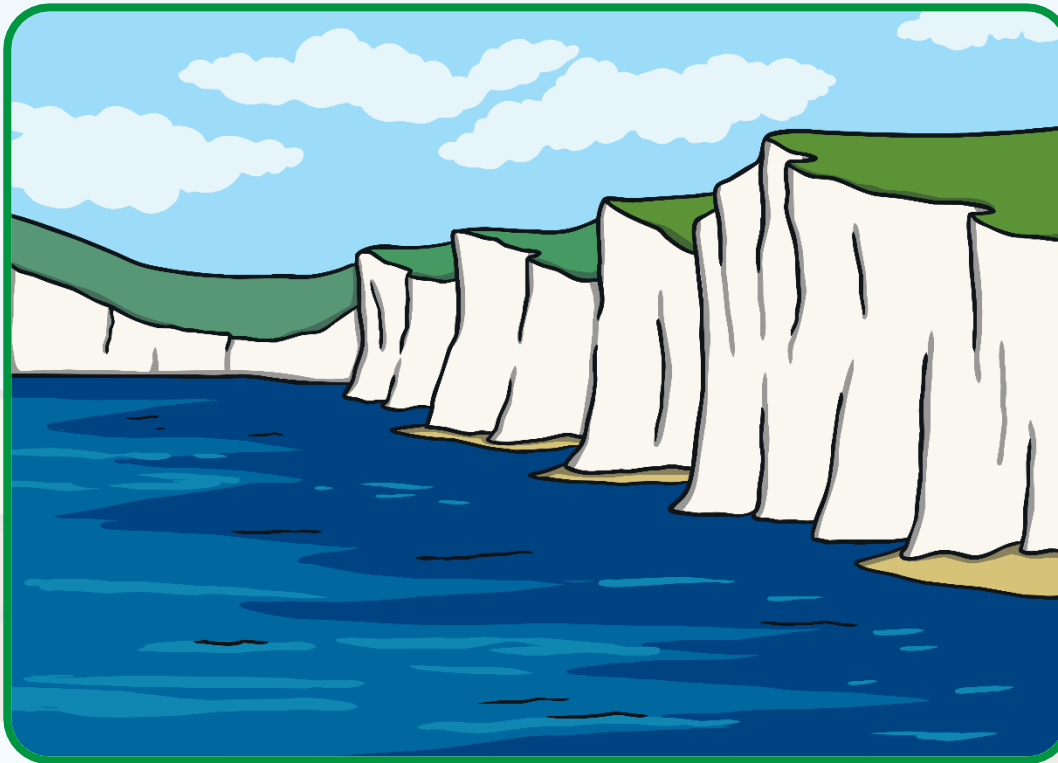
# Cave

I am a large hollow place in the side of a hill or cliff.  
I could also be underground.



# Cliff

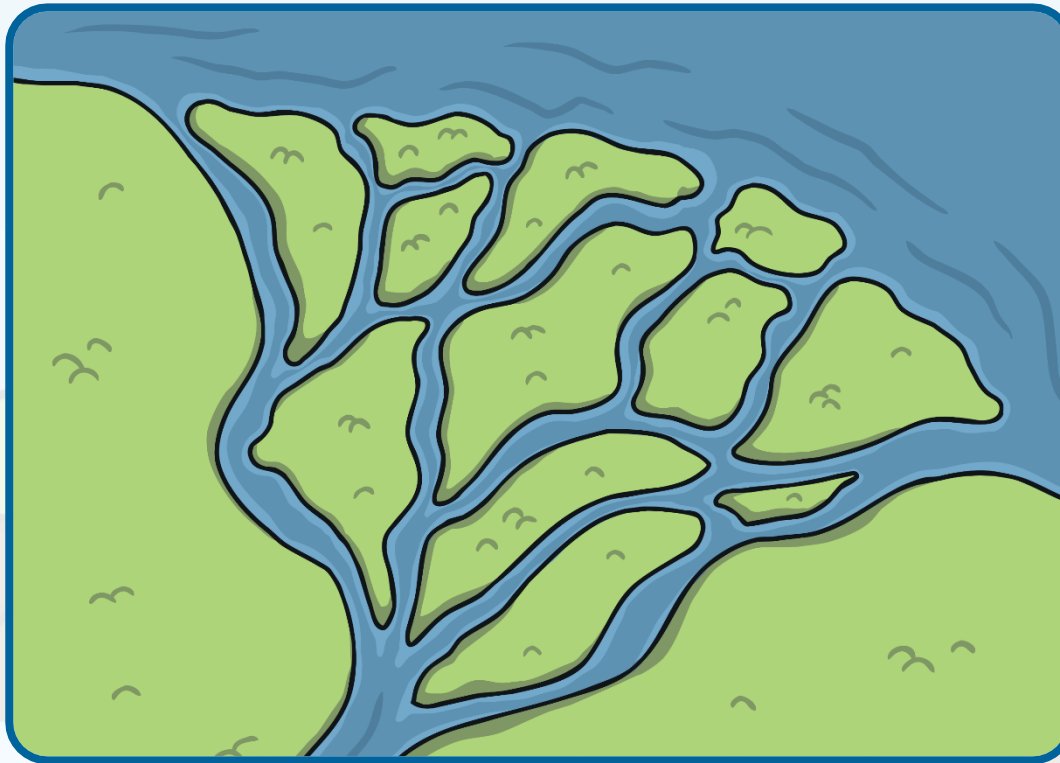
I am a very steep face of rock.





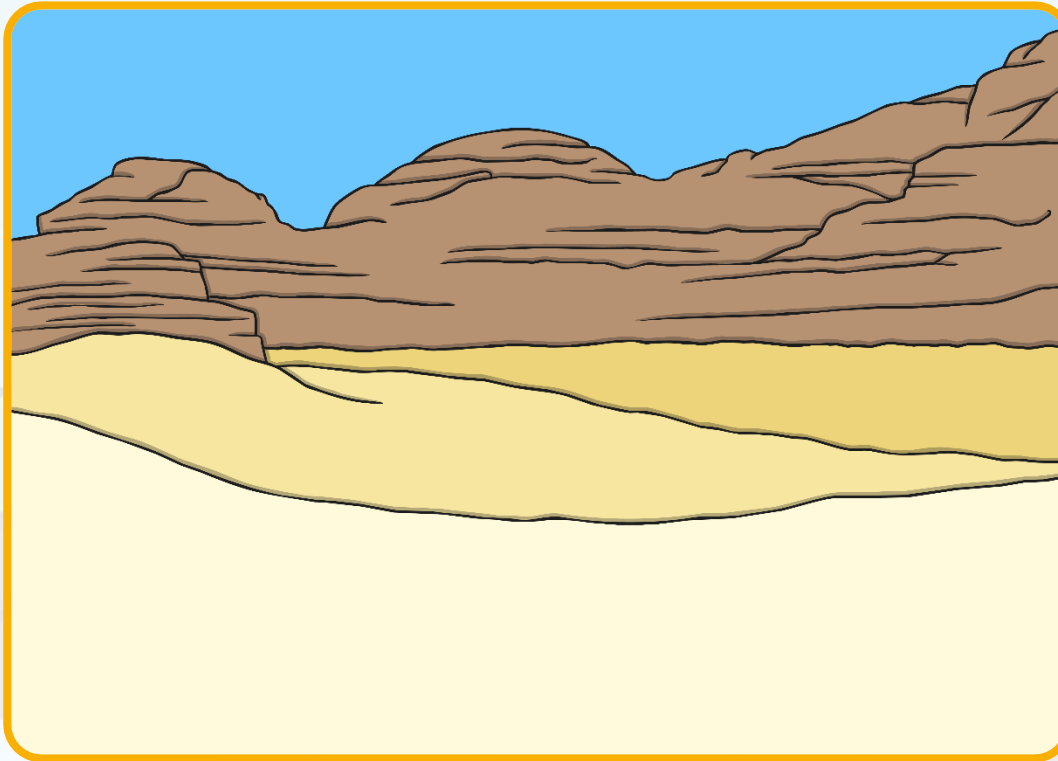
# Delta

I am a piece of land made by mud deposits and sand.  
I am located at the mouth of a river. I am shaped like a triangle.



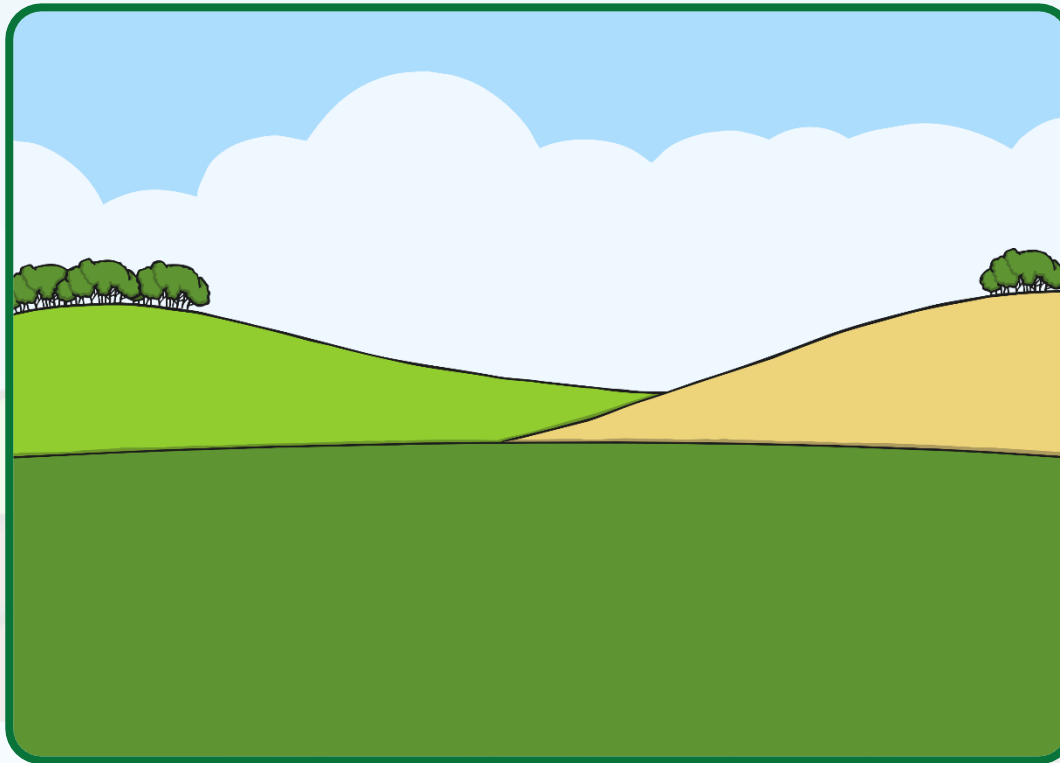
# Desert

I am a place that gets very little rain each year.



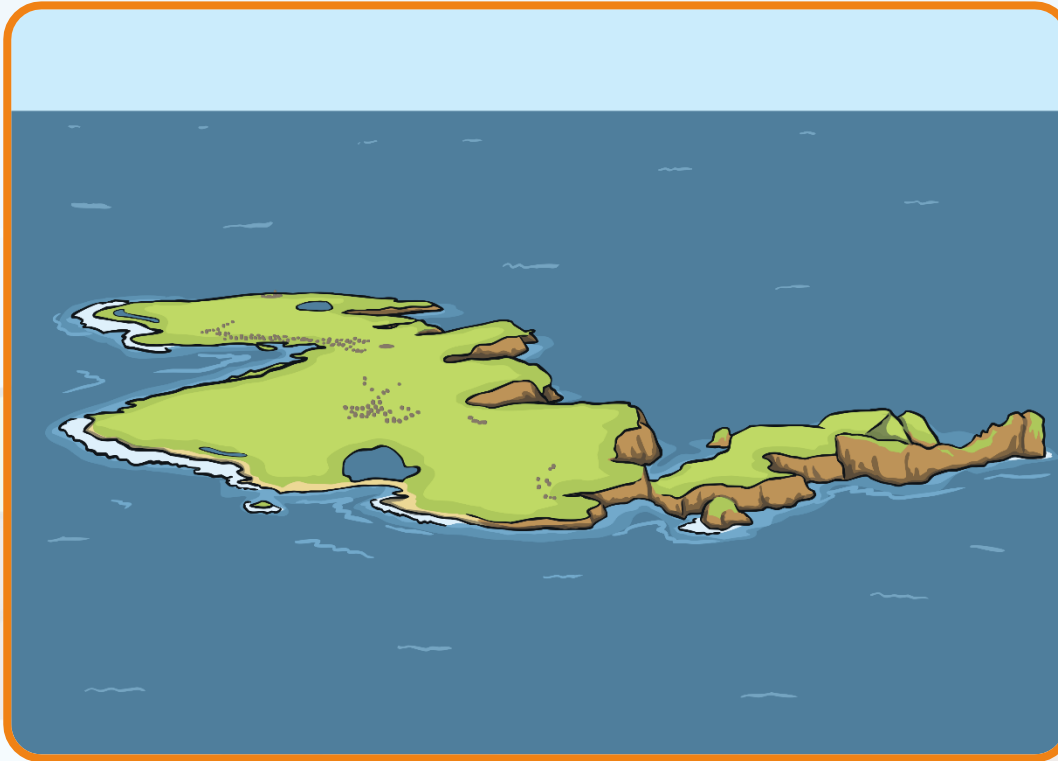
# Hill

I am a raised and rounded bit of land. I am not as tall as a mountain.



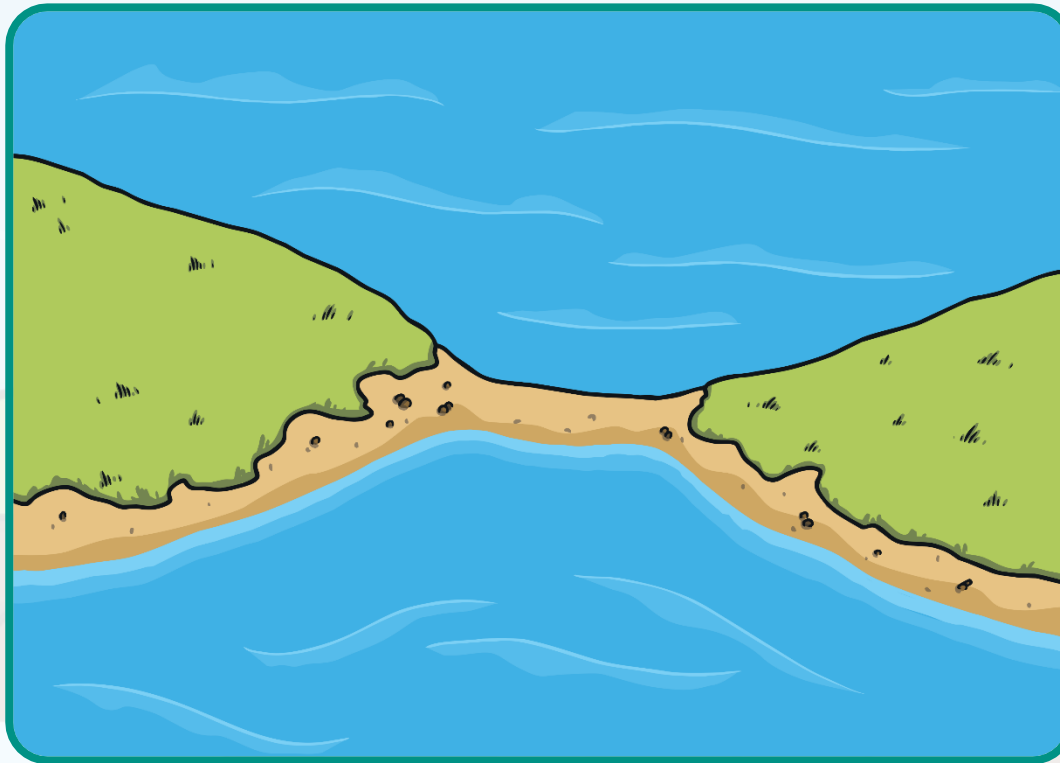
# Island

I am an area of land.  
I have water on all sides of me.



# Isthmus

I am a narrow strip of land that separates two bodies of water.  
I also connect two larger areas of land.





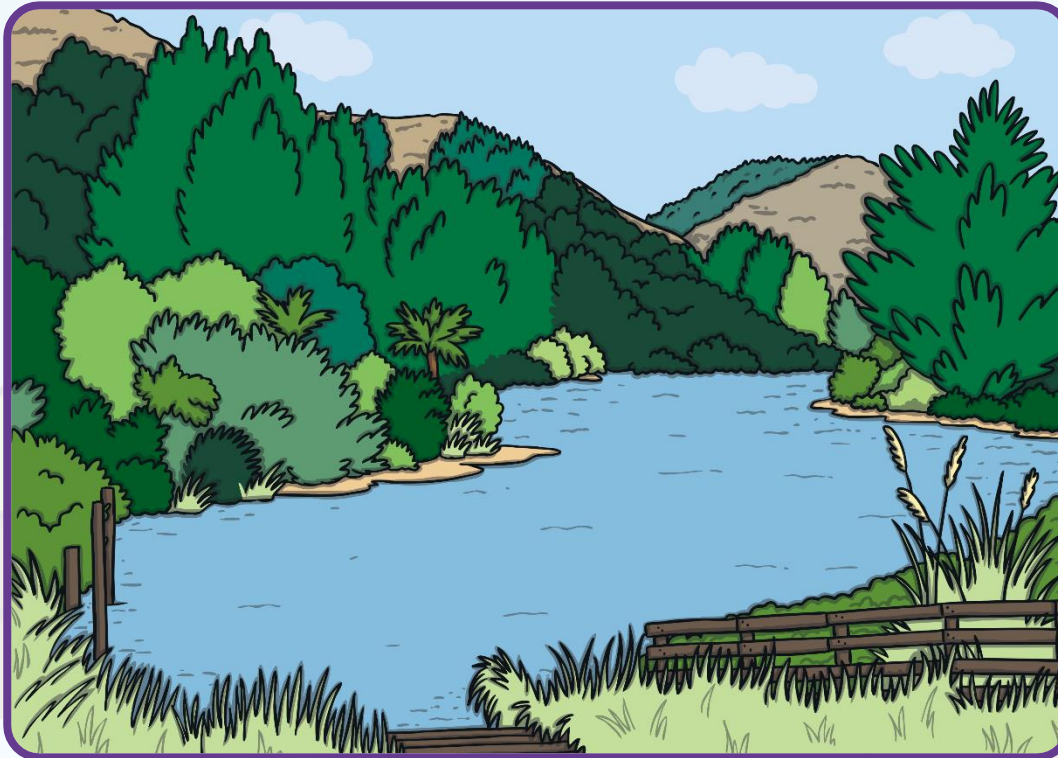
# Jungle

I am a forest thick with trees.  
I am the home to many tropical plants and animals.



# Lake

I am a large body of water surrounded by land. I am not an ocean.



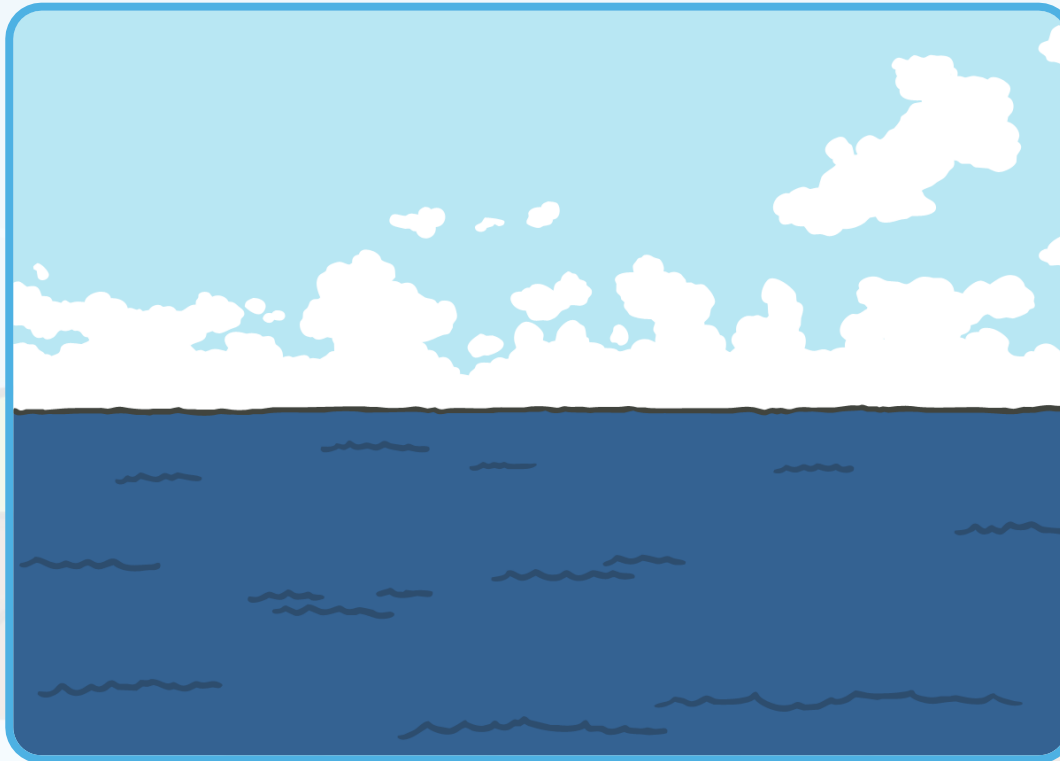
# Mountain

I am the tallest landform.  
I rise high into the sky, way above the hills.



# Ocean

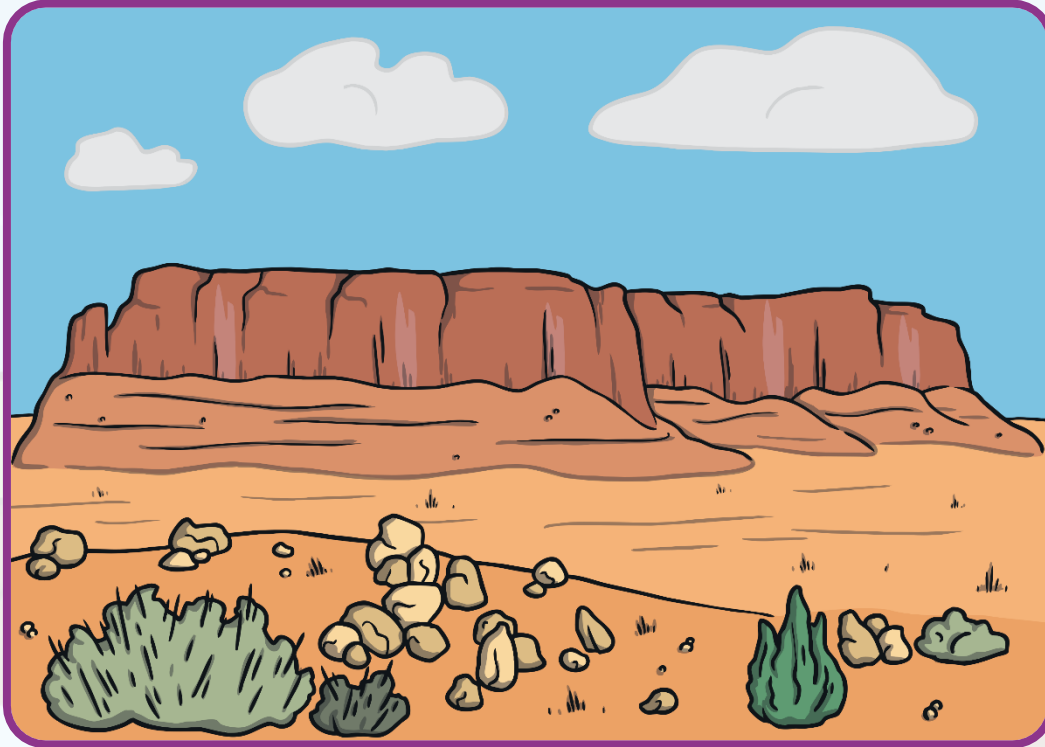
I am very large with lots of animals and plants inside me.  
I cover most of the Earth's surface, 71% to be exact.





# Plateau

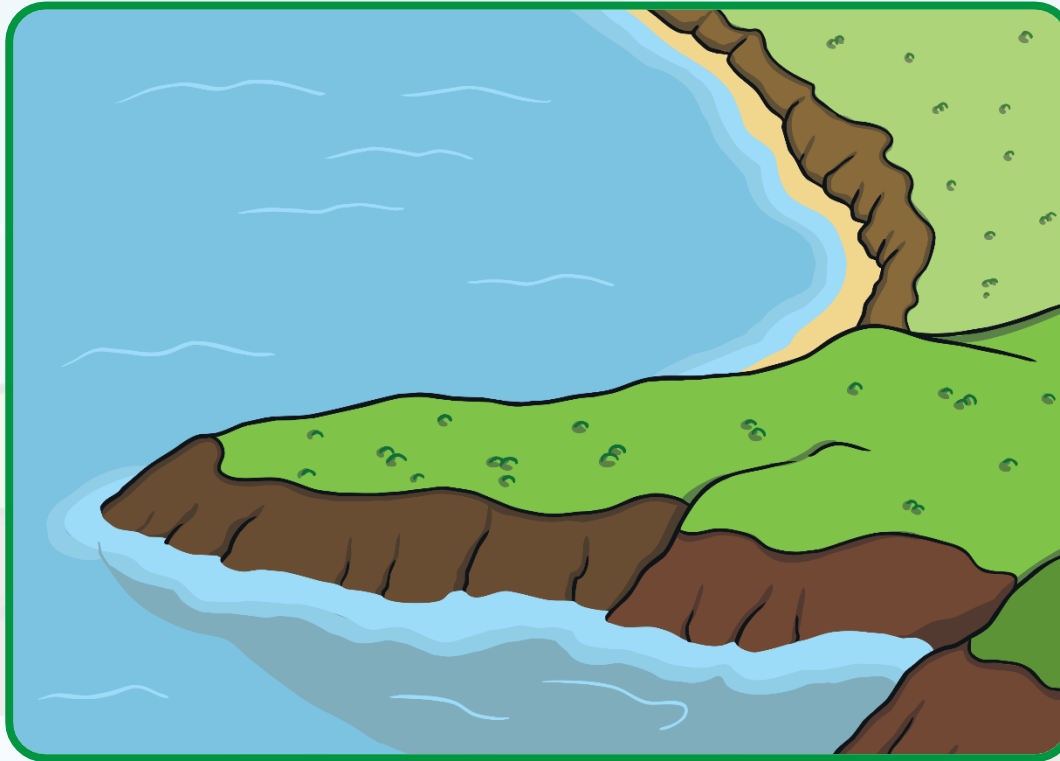
I am a raised, flat surface.  
I am bound on all sides by cliffs or steep slopes.





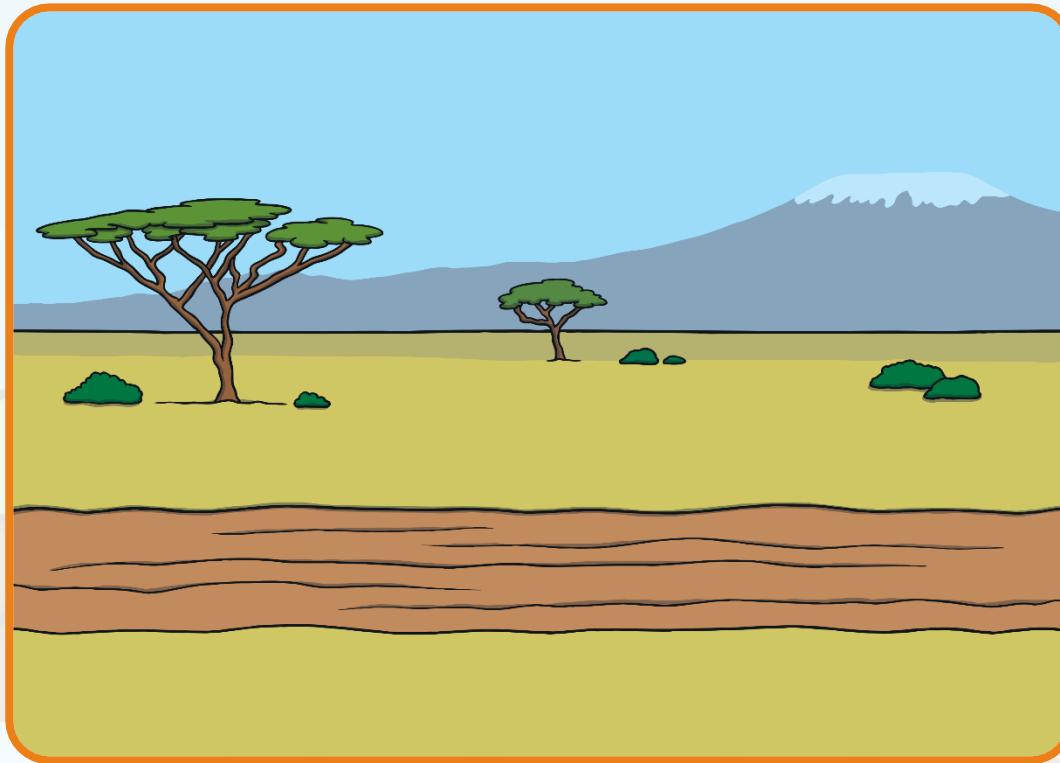
# Peninsula

I am land surrounded by water on three sides.



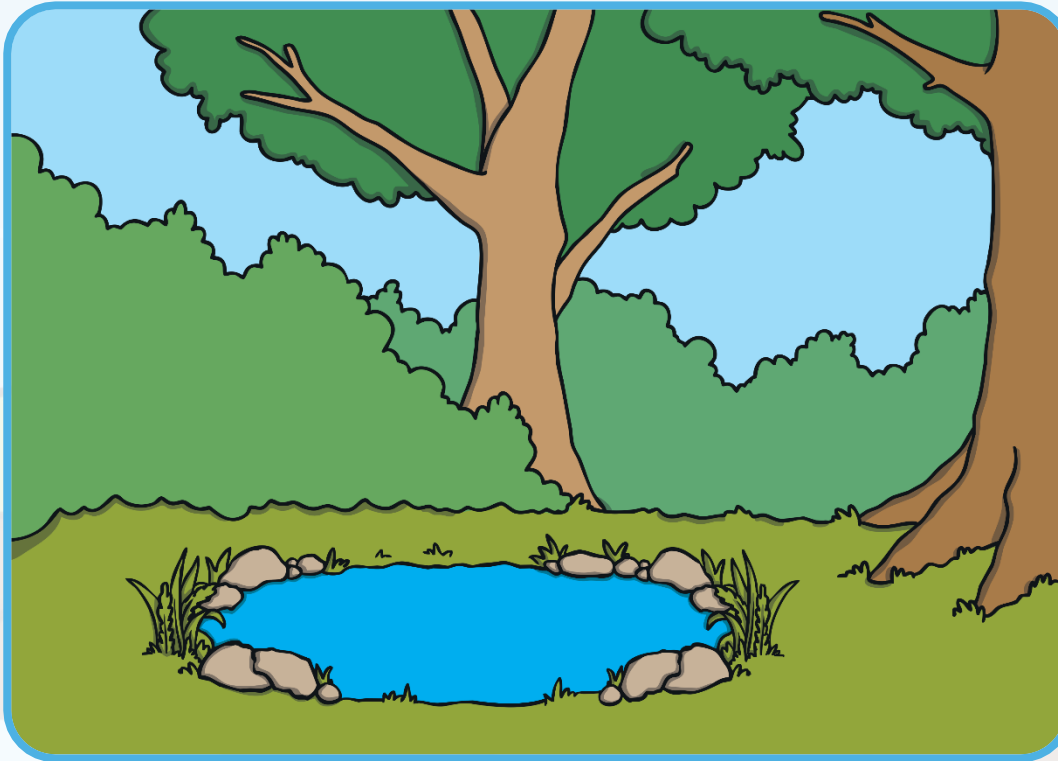
# Plain

I am a large, flat area of land.  
I am covered in grass.



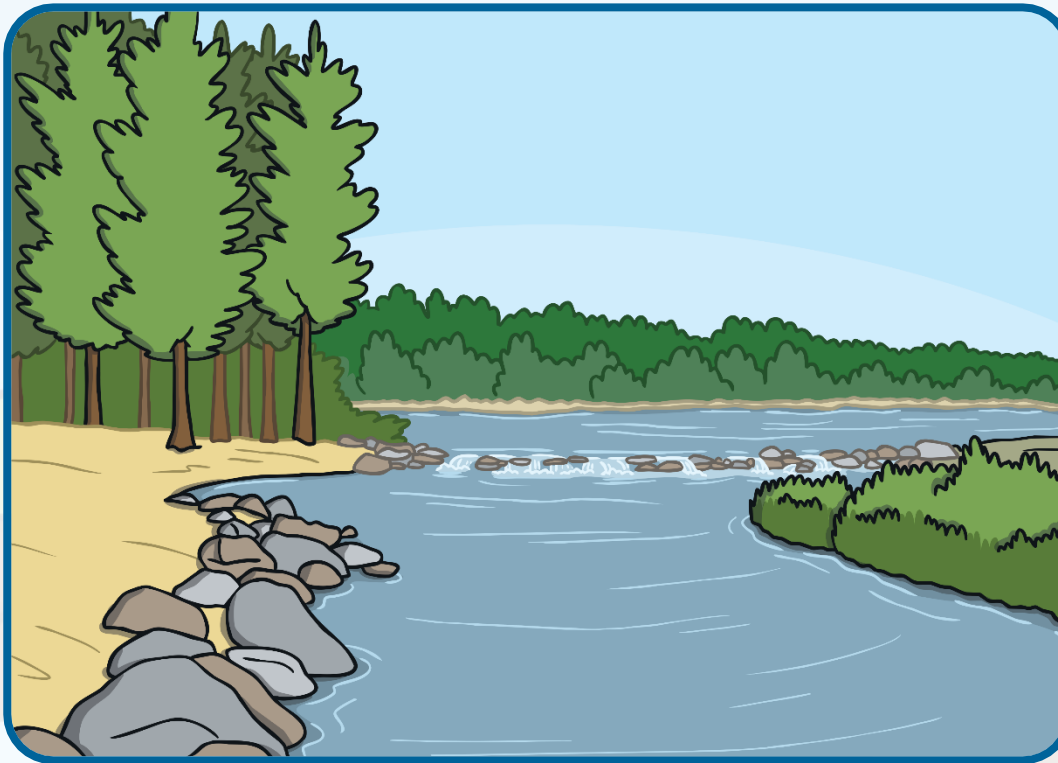
# Pond

I am a small area of water,  
smaller than a lake. I have freshwater.



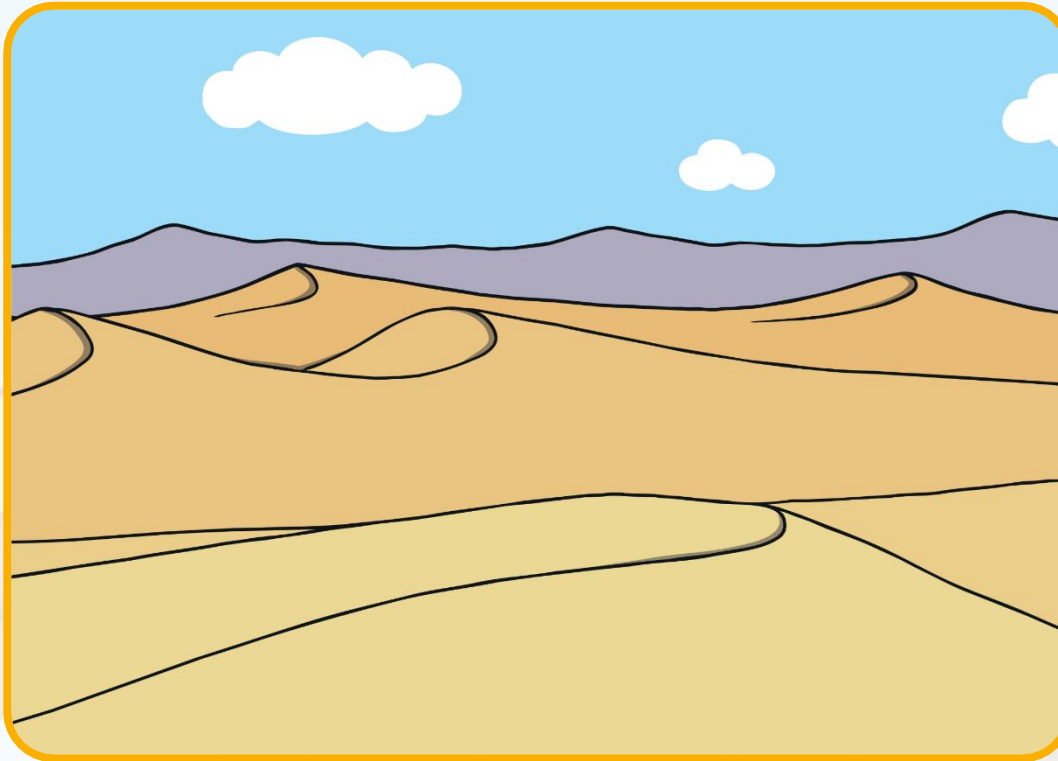
# River

I am a flowing, moving stream of water that flows into an ocean, lake, pond, or other river.



# Sand Dune

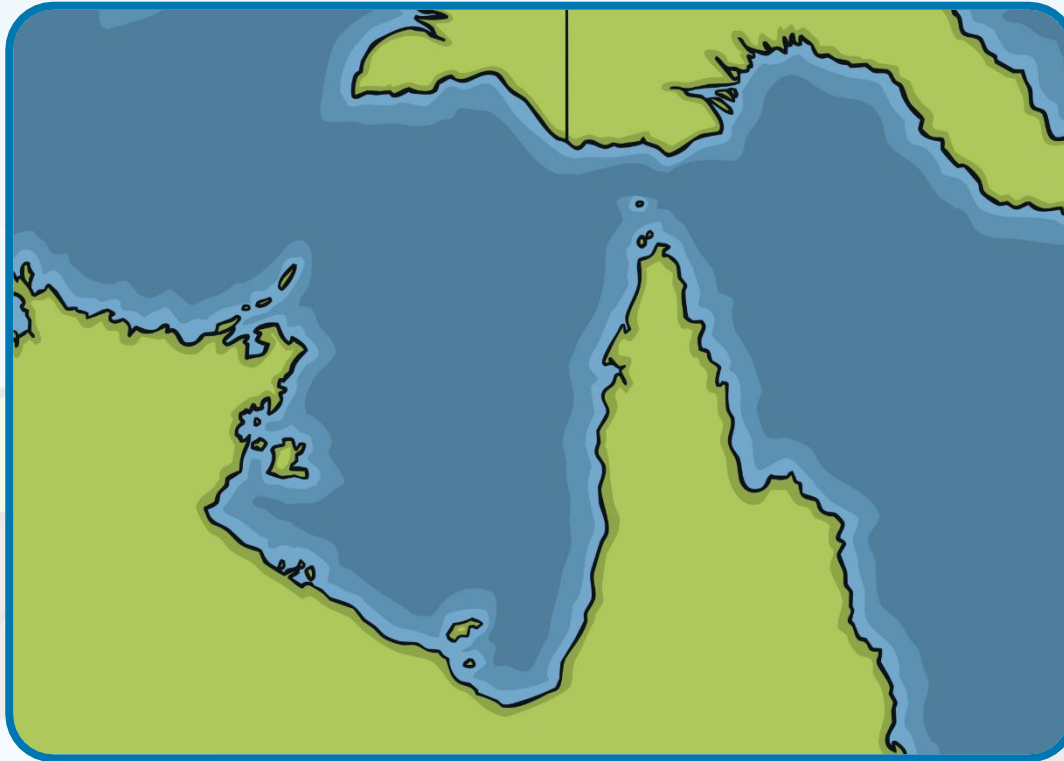
I am a hill made of sand. I can be at a beach or in the desert.





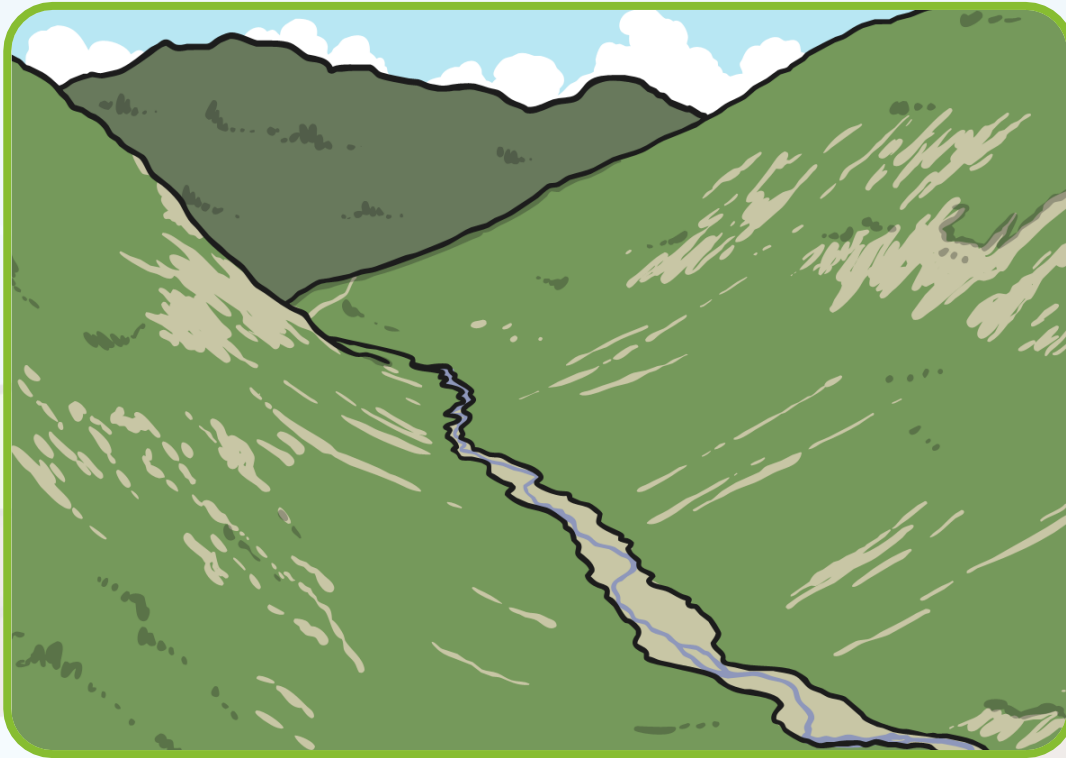
# Strait

I am a narrow body of water.  
I connect two larger bodies of water.



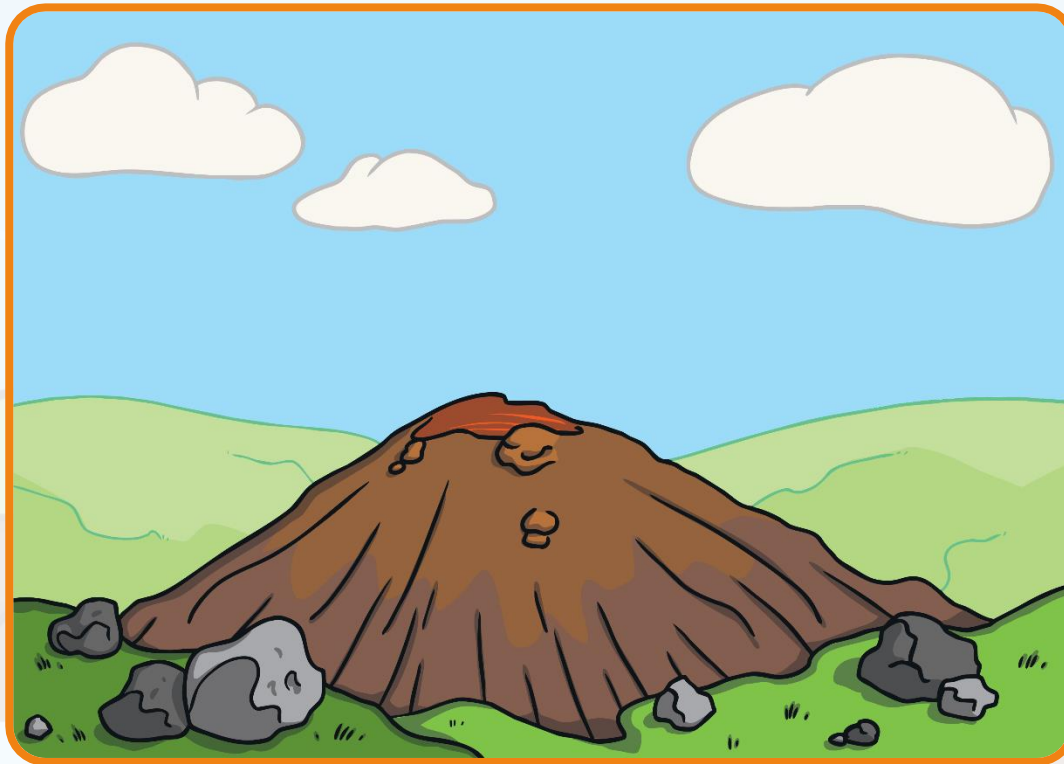
# Valley

I am a low area.  
I am in the middle of two tall mountains.



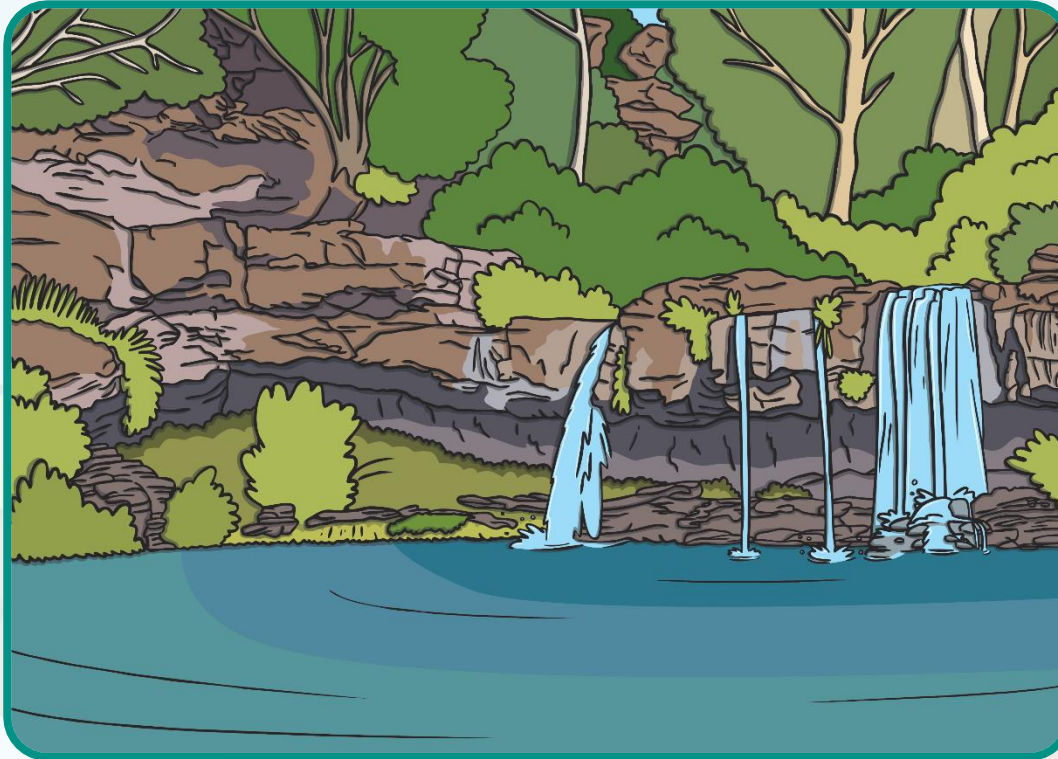
# Volcano

I am a tall landform.  
Sometimes hot lava comes out of my top.

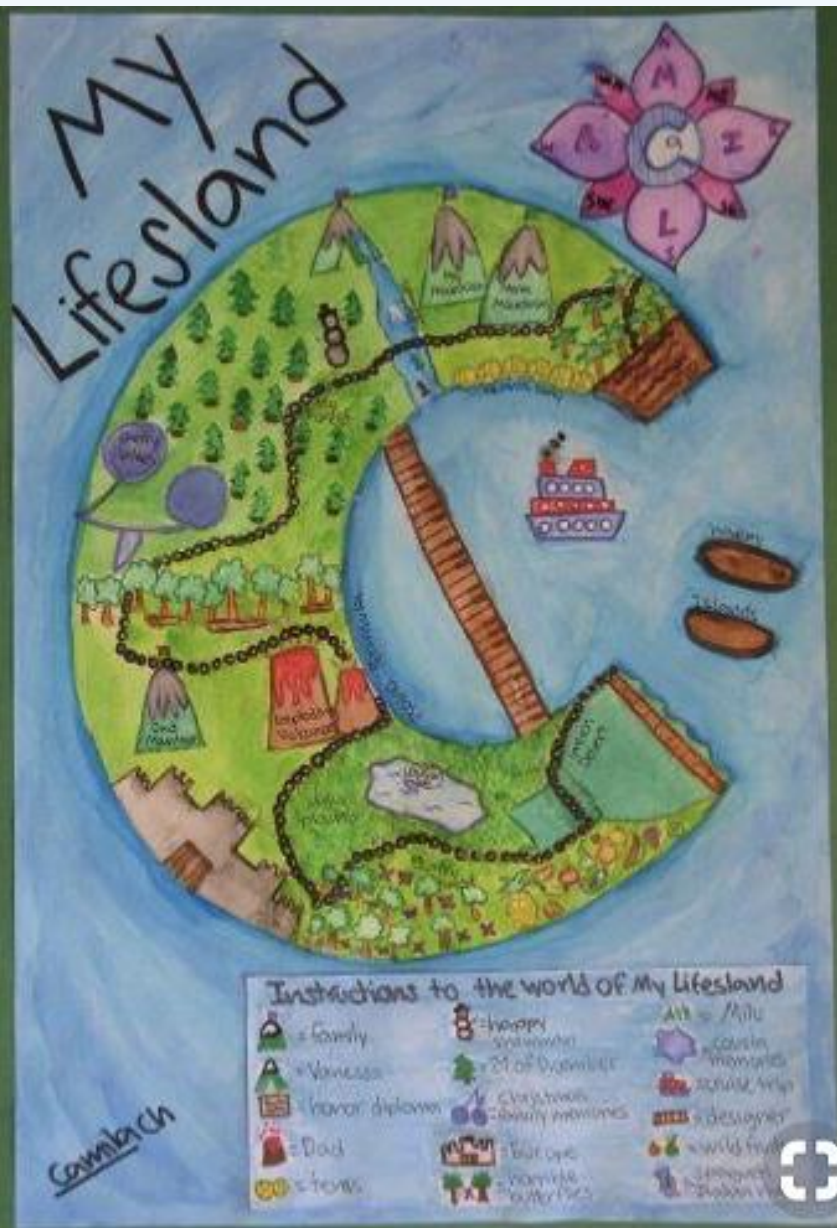


# Waterfall

I am a body of water. My water starts at the top of a high cliff, then drops to a body of water further down.







Create your own Lifesland!

First of all draw the first letter of your first name or last name.

You might even want to have a large letter island for your first name and then a smaller island for your last name!

# MY LIFESLAND!



Then use different landforms to create your island and represent things such as:

- Family
- Friends
- Hobbies/ interests
- Likes/dislikes
- Special talents

Make sure to include a key on your island map so you know what each landform represents.