

Timetables

1 Here is a bus timetable.

	Bus A	Bus B	Bus C
Green Park Road	08:45	09:00	09:15
Forrest Drive	09:05	09:20	09:35
Summerville Street	09:22	09:37	09:52
Penny Bridge	09:40	09:55	

a) What time does Bus A arrive at Green Park Road?

08:45

b) What time does Bus B arrive at Summerville Street?

09:37

c) What time does Bus C arrive at Forrest Drive?

09:35

d) Each bus takes the same amount of time to get from Green Park Road to Penny Bridge.

What time does Bus C arrive at Penny Bridge?

10:10

e) Eva needs to be at Summerville Street by 9:35

Which bus does she need to get from Green Park Road?

08:45

2 Here is an extract from a TV guide.

17:00	17:30	18:00	18:30	19:00	19:30	20:00
News	Catch It!	Giant George	Wilson Street		News	Detective Files

a) At what times is the news on?

17:00

and

19:15

b) What time does *Detective Files* start?

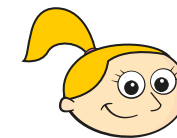
19:30

c) How long is *Wilson Street* on for? 1 hour

d) Eva is working out how long *Catch it!* is on for.

Here are her workings.

$$\begin{array}{r}
 79 \\
 18:10 \\
 - 17:15 \\
 \hline
 00:85
 \end{array}$$

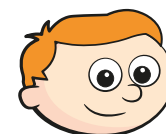


Catch it! is on for 85 minutes.

Do you agree with Eva? No

Talk about it with a partner.

e)




The news is on for half an hour in total.

Do you agree with Ron? Yes

Explain your answer.

3 Here is part of a train timetable.



St Pancras	06:25	06:40	06:55	07:05	07:22
Stratford	06:32	06:47	07:02	07:12	07:29
Ebbsfleet	06:43	06:59	07:15	07:23	07:40
Ashford	—	07:19	—	07:42	—
Gravesend	06:47	—	07:18	—	07:43

- a) How many of the trains go all the way from St Pancras to Gravesend? 3
- b) How long does the 06:40 take to get from St Pancras to Ashford?

39 minutes

- c) Which train takes the least amount of time to get from St Pancras to Gravesend?
- 07:22

4 In this timetable, all the trains stop at every station and the times taken between stations does not change.

Fill in the missing information.



Aberford	08:30	11:00	13:10	14:36
Cartown	08:52	11:22	13:32	14:58
Donville	09:07	11:37	13:47	15:13
Highborough	09:21	11:51	14:01	15:27
Southland	09:57	12:27	14:37	16:03

5 Draw a timetable of your school day. *Various answers.*

- a) How many minutes do you spend at school?

minutes

- b) How many seconds do you have for your lunch break?

seconds

- c) Write your own questions for a partner to answer about your timetable.

- d) Work with a partner to create your timetable for the rest of the week.

Work out how many hours, minutes and days you spend on each subject.

