

Science

Plants

Question: Are trees a type of plant?

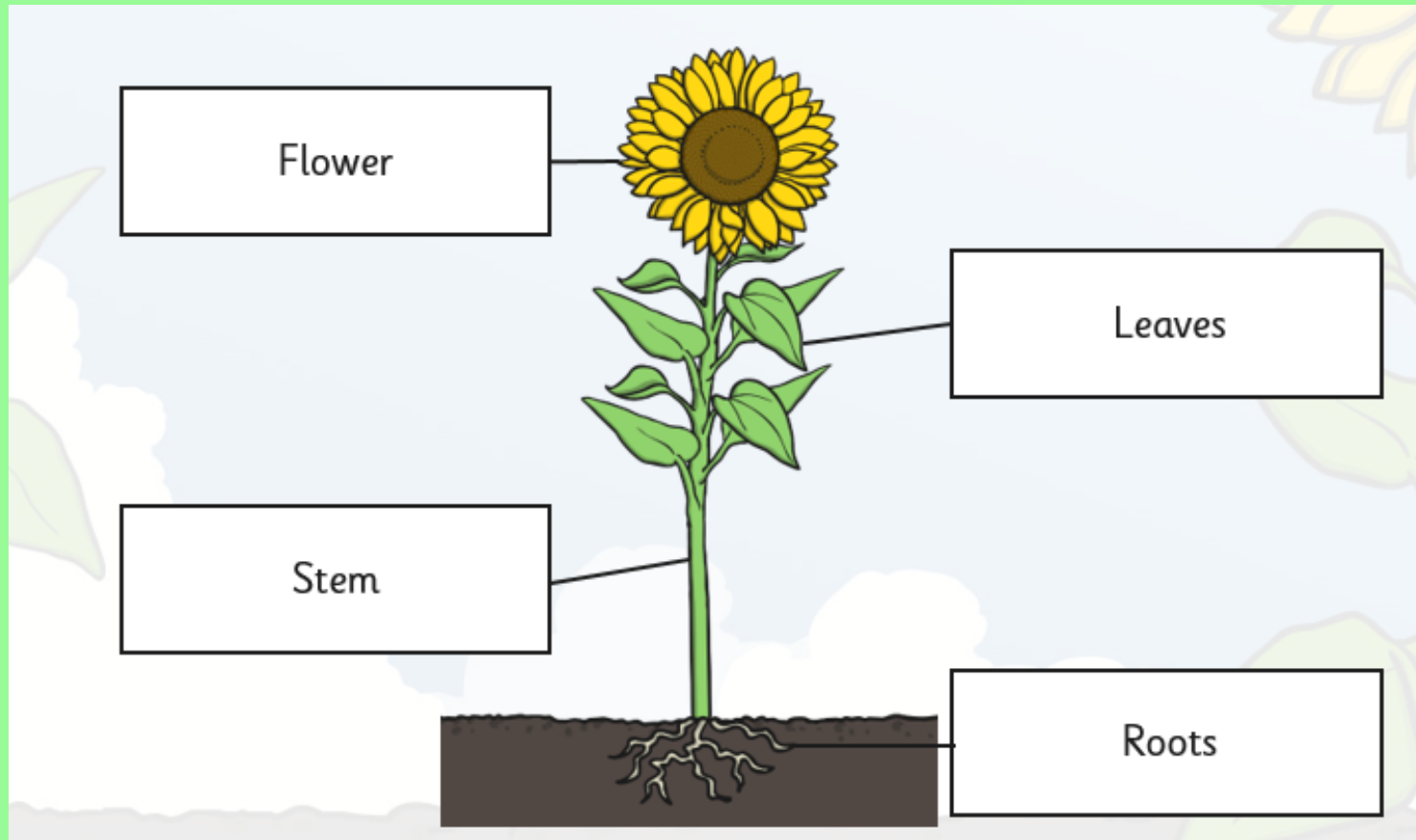
Answer: Yes trees are a type of plant with an elongated stem, or trunk that supports the branches and leaves.



Question: What is the worlds tallest plant?

Answer: The tallest trees in the world are redwoods (*Sequoia sempervirens*), which tower above the ground in California. These trees can easily reach heights of 300 feet (91 meters).





[https://www.youtube.com/watch?](https://www.youtube.com/watch?v=bLhTgTwbYMI&index=1&list=PLcvEcrsF_9zLI1enZ2h4kF396AtH90d9F)

[v=bLhTgTwbYMI&index=1&list=PLcvEcrsF_9zLI1enZ2h4kF396AtH90d9F](https://www.youtube.com/watch?v=bLhTgTwbYMI&index=1&list=PLcvEcrsF_9zLI1enZ2h4kF396AtH90d9F)

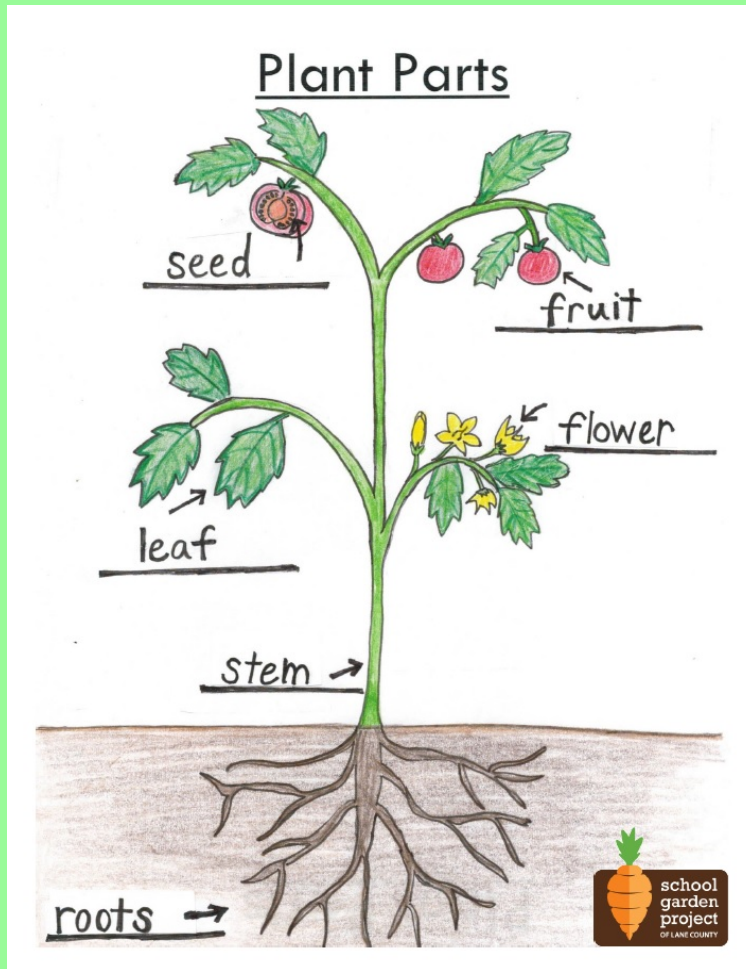


Thursday 26th March

L.O: To explain the function of different parts of flowering plants

Task - Match the structure to the function

In your book, draw a diagram of a flower and label the structures. Then write down underneath what the function of those structures are.



Holds the plant up and transports water to all parts of the plant.

Uses sunlight to make food for the plant.

Contains seeds, which make new plants when put in the ground.

Attracts insects and starts to make new fruit.

Keeps the plant anchored and takes in water.

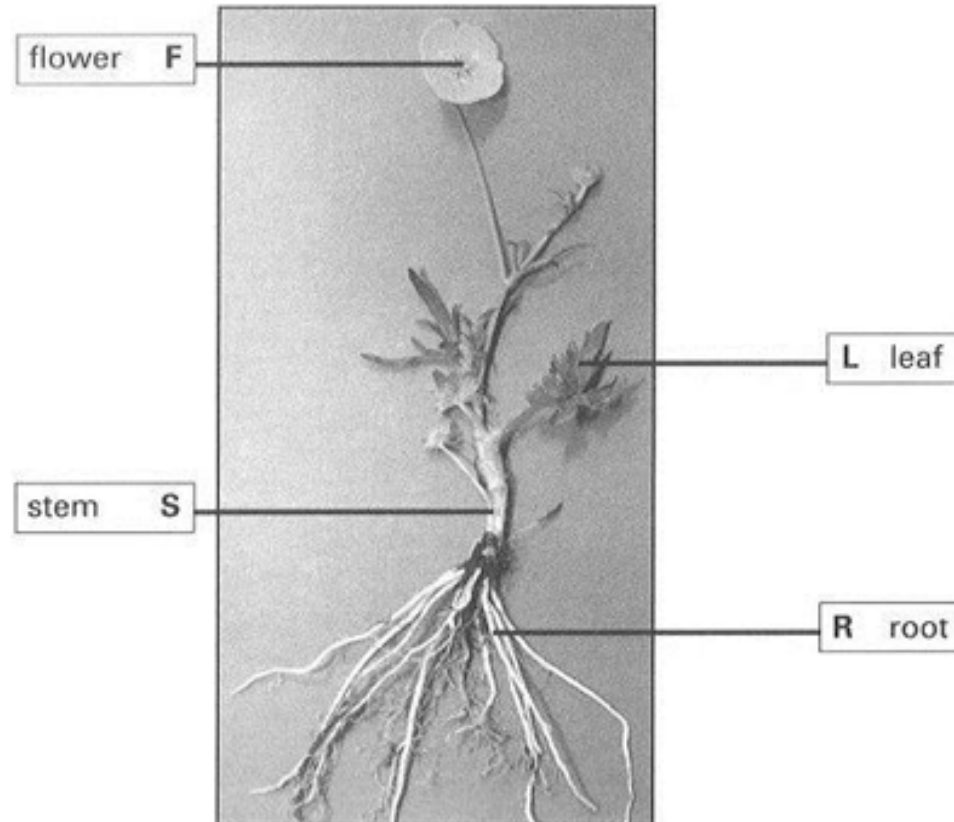
Part of a plant which develops into a leaf or a flower.

Structure	Function
Flower	Attracts insects and starts to make new fruit.
Leaf	Uses sunlight to make food for the plant.
Bud	Part of a plant which develops into a leaf or a flower.
Stem	Holds the plant up and transports water to all parts of the plant.
Root	Keeps the plant anchored and takes in water.
Fruit	Contains seeds, which make new plants when put in the ground.

Extra task: Answer the following questions in your books

Parts of a Plant

(a) Different parts of the plant have been labelled.



Where in the plant do the following two things happen?

Write a letter for the correct part of the plant in the box.

(i) Part of the plant where water and nutrients are absorbed from the soil

(ii) Part of the plant where seeds will form

(b) What must all plants have to grow well?

Tick **TWO** boxes.

light

worms

gravel

darkness

nutrients

pots